

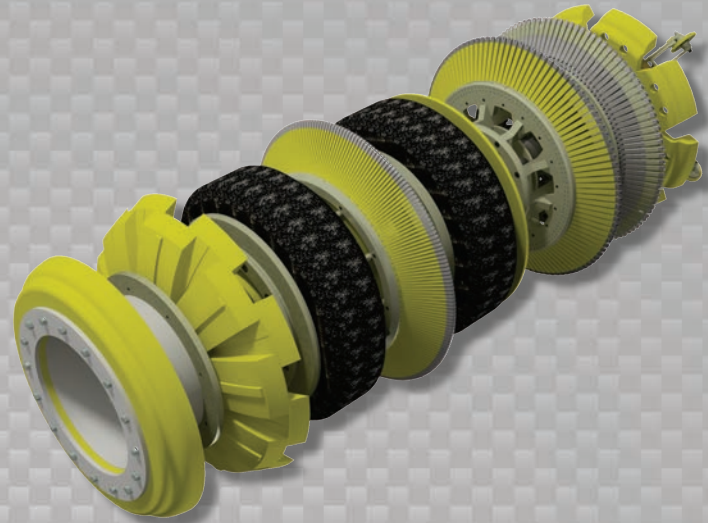


**Data Sets (No. of Sensors)**

Metal Loss	432
Residual	216
Caliper	108
Odometer	2

**Physical Attributes**

Length	95 in (2718 mm)
Weight	1950 lb (885 kg)



**Operational**

Maximum Pressure	1500 psi (10342 kPa)
Temperature Range	32° to 140°F (0° to 60°C)
<sup>1</sup> Velocity (Preferred)	0.1 to 9 mph (0.04 to 4 m/s)
Minimum Required Diff. Pressure (Launching)	20 psi (138 kPa)
Minimum Required Diff. Pressure (Running)	15 psi (103 kPa)

**Pipeline Geometry Requirements**

Local Min. Cross Section Diameter	24.00 in (610 mm)
Feature Bore Restriction Diameter	27.00 in (686 mm)
Minimum Bend Radius	1.5D
Minimum Bend Separation (1.5D Bends)	15 in (381 mm)
Minimum Tee Separation (Centerline to Centerline)	75 in (1905 mm)
Maximum Recordable Wall Thickness [ @ 9 mph (4 m/s) ]	0.75 in (19 mm)

**Reporting**

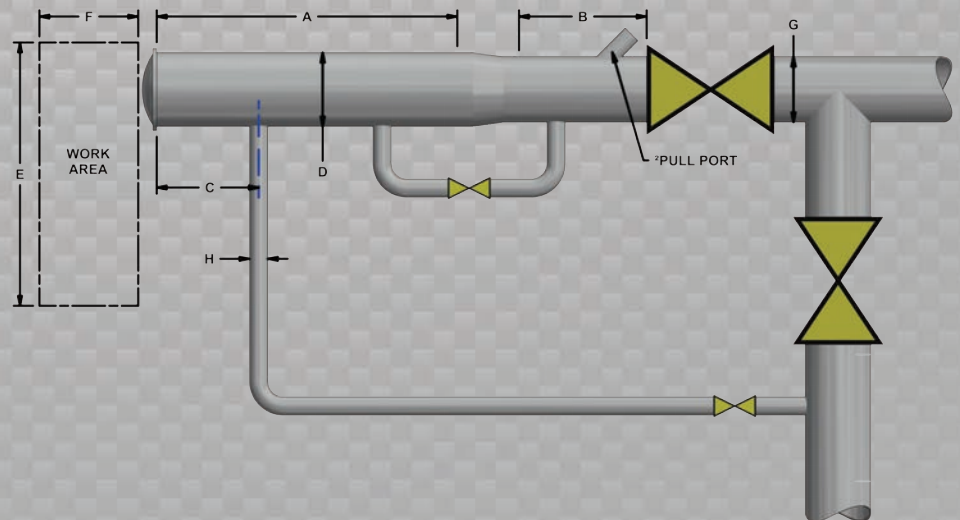
<b>Metal Loss</b>	Refer to Tool Performance Specification
<b>Geometry Data</b>	
Reporting Threshold	0.5% of Pipe OD (0.15 in/3.8 mm)
Sizing Accuracy (Depth)	0.15 in (3.8 mm)
<b>Location Accuracy</b>	
Axial	±1 in (25 mm) within a joint
Circumferential	±10°
<b>Bend Data</b>	
Angle Accuracy	±2°

**Suggested Minimum Trap Dimensions**

Traps	A	B	C	D	E	F	G	H
<b>Launcher</b>	107 in (2718 mm)	48 in (1219 mm)	18 in (457 mm)	32 in (813 mm)	78 in (1981 mm)	167 in (4242 mm)	30 in (762 mm)	8 in (203 mm)
<b>Receiver</b>	107 in (2718 mm)	107 in (2718 mm)	18 in (457 mm)	32 in (813 mm)	78 in (1981 mm)	167 in (4242 mm)	30 in (762 mm)	8 in (203 mm)

**Notes**

- Data quality and run success is dependent on tool speed & line conditions
- Pipelines that are outside of the scope of these specifications can be assessed on an individual basis
- Tool design may vary from image above
- <sup>1</sup>Optional Dynamic Speed Control available
- <sup>2</sup>Contact Enduro for details



**30" DfL-DD**