

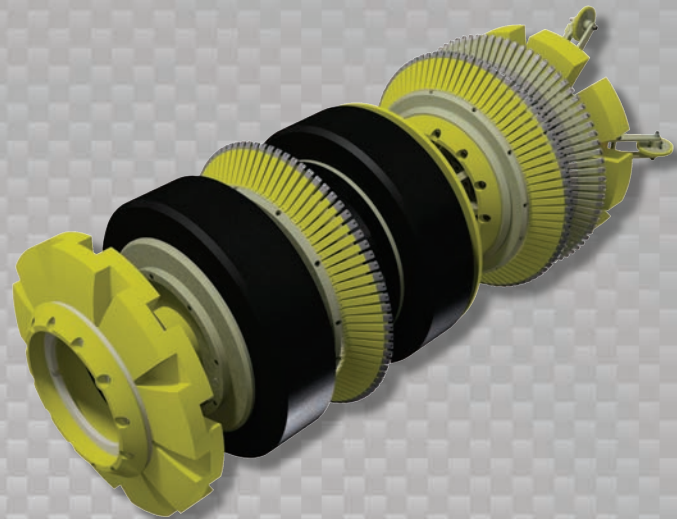


Data Sets (No. of Sensors)

Metal Loss	168
Residual	168
Caliper	84
Odometer	2

Physical Attributes

Length	73 in (1854 mm)
Weight	1345 lb (610 kg)



Operational

Maximum Pressure	1500 psi (10342 kPa)
Temperature Range	32° to 140°F (0° to 60°C)
Velocity (Preferred)	0.1 to 9 mph (0.04 to 4 m/s)
Minimum Required Diff. Pressure (Launching)	25 psi (172 kPa)
Minimum Required Diff. Pressure (Running)	20 psi (138 kPa)

Pipeline Geometry Requirements

Local Min. Cross Section Diameter	20.80 in (528 mm)
Feature Bore Restriction Diameter	23.50 in (597 mm)
Minimum Bend Radius	1.5D
Minimum Bend Separation (1.5D Bends)	13 in (330 mm)
Minimum Tee Separation (Centerline to Centerline)	65 in (1651 mm)
Maximum Recordable Wall Thickness [@ 9 mph (4 m/s)]	0.75 in (19 mm)

Reporting

Metal Loss	Refer to Tool Performance Specification
Geometry Data	
Reporting Threshold	0.5% of Pipe OD (0.13 in/3.3 mm)
Sizing Accuracy (Depth)	0.13 in (3.3 mm)
Location Accuracy	
Axial	±1 in (25 mm) within a joint
Circumferential	±10°
Bend Data	
Angle Accuracy	±2°

Suggested Minimum Trap Dimensions

Traps	A	B	C	D	E	F	G	H
Launcher	85 in (2159 mm)	37 in (940 mm)	18 in (457 mm)	28 in (711 mm)	74 in (1880 mm)	145 in (3683 mm)	26 in (660 mm)	8 in (203 mm)
Receiver	85 in (2159 mm)	85 in (2159 mm)	18 in (457 mm)	28 in (711 mm)	74 in (1880 mm)	145 in (3683 mm)	26 in (660 mm)	8 in (203 mm)

Notes

- Data quality and run success is dependent on tool speed & line conditions
- Pipelines that are outside of the scope of these specifications can be assessed on an individual basis
- Tool design may vary from image above
- ²Contact Enduro for details

