

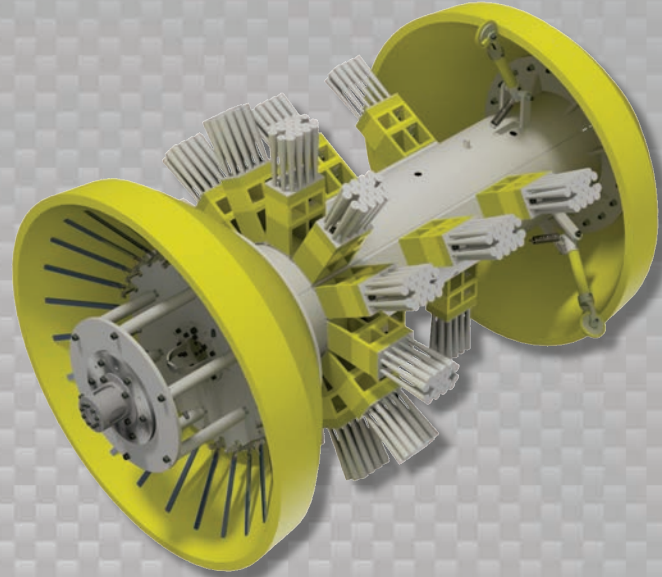


**Data Sets (No. of Sensors)**

Caliper	24
Odometer	2

**Physical Attributes**

Length	78 in (1982 mm)
Weight	1766 lb (801 kg)



**Operational**

Maximum Pressure	1500 psi (10342 kPa)
Temperature Range	32° to 140°F (0° to 60°C)
Velocity (Preferred)	0.1 to 9 mph (0.04 to 4 m/s)
Minimum Required Diff. Pressure (Launching)	20 psi (138 kPa)
Minimum Required Diff. Pressure (Running)	10 psi (69 kPa)

**Pipeline Geometry Requirements**

Minimum Cross Section Diameter	36.00 in (914 mm)
Minimum Bend Radius	1.5D
Minimum Bend Separation (1.5D Bends)	Back to Back
Minimum Tee Separation (Centerline to Centerline)	120 in (3048 mm)

**Reporting**

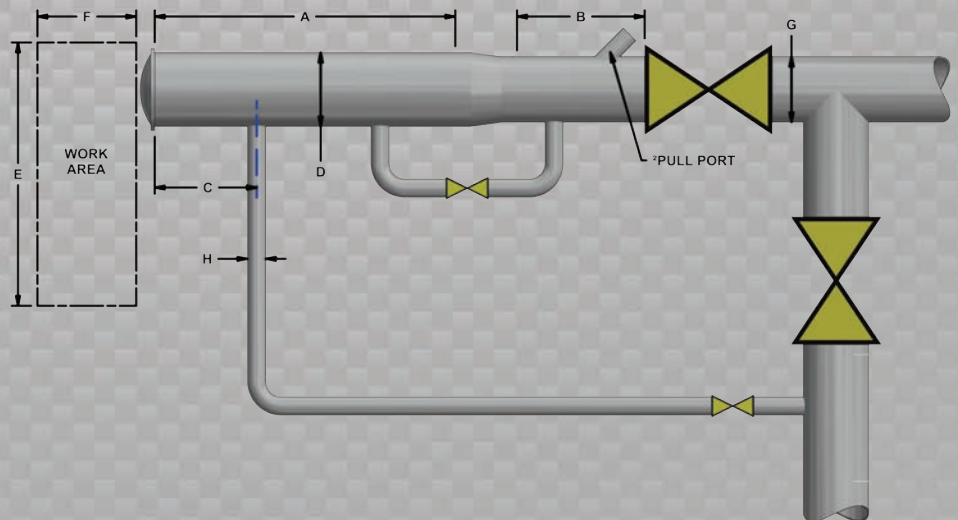
<b>Dent/Ovality Sizing</b>	
Dent Depth Sizing	0.24 in (6.1 mm)
Ovality ID Reduction Accuracy	0.24 in (6.1 mm)
<b>Location Accuracy</b>	
Feature to Upstream Girth Weld	±1 in (25 mm)
Feature Orientation	±15°
<b>Bend Data</b>	
Angle Accuracy	±2°
<b>Axial Sampling</b>	
Depends on Speed, Line Condition & Length 0.1 in (2.5 mm)	

**Suggested Minimum Trap Dimensions (Contact Enduro For Minimum DdL-Combo Trap Dimensions)**

Traps	A	B	C	D	E	F	G	H
<b>Launcher</b>	90 in (2286 mm)	39 in (991 mm)	18 in (457 mm)	50 in (1270 mm)	96 in (2438 mm)	150 in (3810 mm)	48 in (1219 mm)	12 in (305 mm)
<b>Receiver</b>	90 in (2286 mm)	90 in (2286 mm)	18 in (457 mm)	50 in (1270 mm)	96 in (2438 mm)	150 in (3810 mm)	48 in (1219 mm)	12 in (305 mm)

**Notes**

- Data quality and run success is dependent on tool speed & line conditions
- Pipelines that are outside of the scope of these specifications can be assessed on an individual basis
- Tool design may vary from image above
- <sup>2</sup>Contact Enduro for details



**48" DdL**