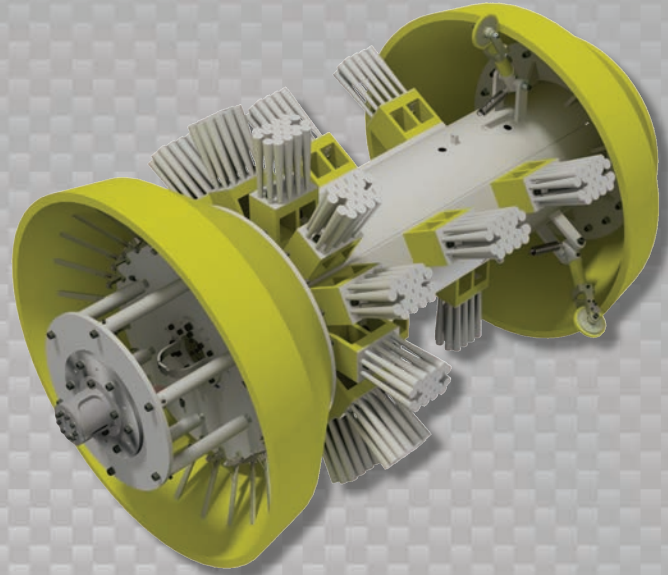


Data Sets (No. of Sensors)

Physical Attributes

Caliper	24
Odometer	2

Length	78 in (1982 mm)
Weight	1444 lb (655 kg)



Operational

Maximum Pressure	1500 psi (10342 kPa)
Temperature Range	32° to 140°F (0° to 60°C)
Velocity (Preferred)	0.1 to 9 mph (0.04 to 4 m/s)
Minimum Required Diff. Pressure (Launching)	20 psi (138 kPa)
Minimum Required Diff. Pressure (Running)	10 psi (69 kPa)

Pipeline Geometry Requirements

Minimum Cross Section Diameter	31.50 in (800 mm)
Minimum Bend Radius	1.5D
Minimum Bend Separation (1.5D Bends)	Back to Back
Minimum Tee Separation (Centerline to Centerline)	105 in (2667 mm)

Reporting

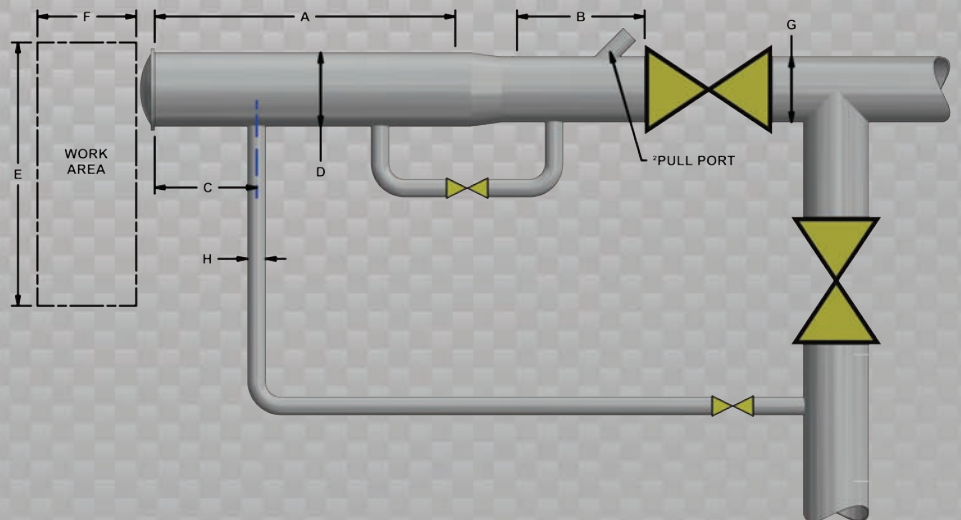
Dent/Ovality Sizing	
Dent Depth Sizing	0.21 in (5.3 mm)
Ovality ID Reduction Accuracy	0.21 in (5.3 mm)
Location Accuracy	
Feature to Upstream Girth Weld	±1 in (25 mm)
Feature Orientation	±15°
Bend Data	
Angle Accuracy	±2°
Axial Sampling	
Depends on Speed, Line Condition & Length 0.1 in (2.5 mm)	

Suggested Minimum Trap Dimensions (Contact Enduro For Minimum DdL-Combo Trap Dimensions)

Traps	A	B	C	D	E	F	G	H
Launcher	90 in (2286 mm)	39 in (991 mm)	18 in (457 mm)	44 in (1118 mm)	90 in (2286 mm)	150 in (3810 mm)	42 in (1067 mm)	10 in (254 mm)
Receiver	90 in (2286 mm)	90 in (2286 mm)	18 in (457 mm)	44 in (1118 mm)	90 in (2286 mm)	150 in (3810 mm)	42 in (1067 mm)	10 in (254 mm)

Notes

- Data quality and run success is dependent on tool speed & line conditions
- Pipelines that are outside of the scope of these specifications can be assessed on an individual basis
- Tool design may vary from image above
- ²Contact Enduro for details



42" DdL