

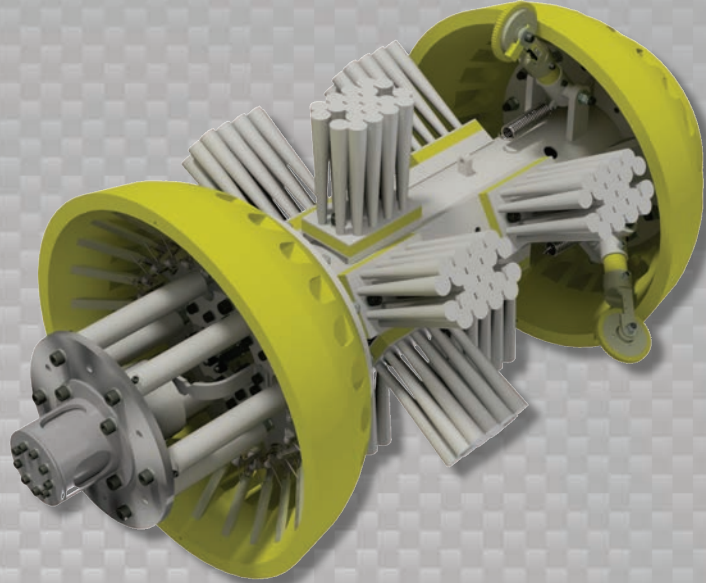


**Data Sets (No. of Sensors)**

**Physical Attributes**

Caliper	24
Odometer	2

Length	49 in (1245 mm)
Weight	375 lb (170 kg)



**Operational**

Maximum Pressure	1500 psi (10342 kPa)
Temperature Range	32° to 140°F (0° to 60°C)
<sup>1</sup> Velocity (Preferred)	0.1 to 9 mph (0.04 to 4 m/s)
Minimum Required Diff. Pressure (Launching)	25 psi (172 kPa)
Minimum Required Diff. Pressure (Running)	20 psi (138 kPa)

**Pipeline Geometry Requirements**

Minimum Cross Section Diameter	18.00 in (457 mm)
Minimum Bend Radius	1.5D
Minimum Bend Separation (1.5D Bends)	Back to Back
Minimum Tee Separation (Centerline to Centerline)	60 in (1524 mm)

**Reporting**

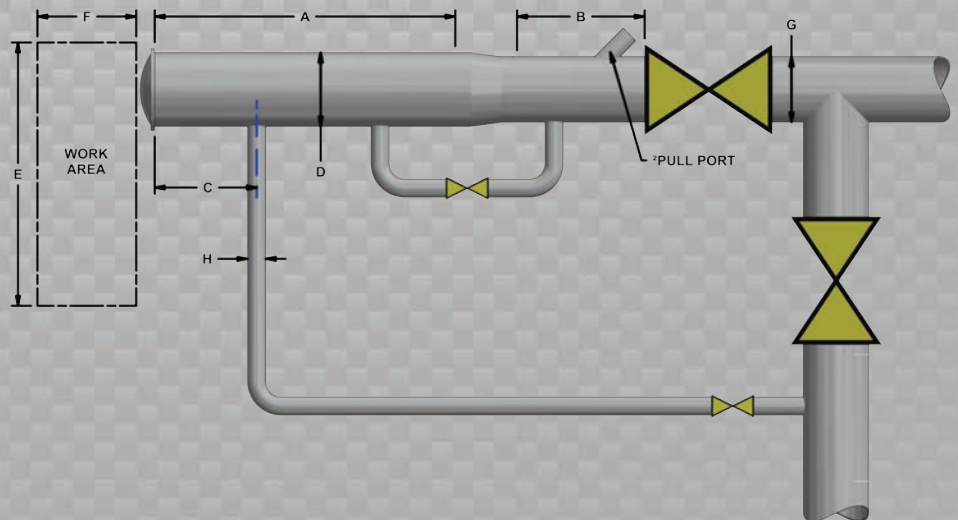
<b>Dent/Ovality Sizing</b>	
Dent Depth Sizing	0.12 in (3.0 mm)
Ovality ID Reduction Accuracy	0.12 in (3.0 mm)
<b>Location Accuracy</b>	
Feature to Upstream Girth Weld	±1 in (25 mm)
Feature Orientation	±15°
<b>Bend Data</b>	
Angle Accuracy	±2°
<b>Axial Sampling</b>	
Depends on Speed, Line Condition & Length 0.1 in (2.5 mm)	

**Suggested Minimum Trap Dimensions (Contact Enduro For Minimum DdL-Combo Trap Dimensions)**

Traps	A	B	C	D	E	F	G	H
<b>Launcher</b>	61 in (1549 mm)	25 in (635 mm)	18 in (457 mm)	26 in (660 mm)	72 in (1829 mm)	121 in (3073 mm)	24 in (610 mm)	6 in (152 mm)
<b>Receiver</b>	61 in (1549 mm)	61 in (1549 mm)	18 in (457 mm)	26 in (660 mm)	72 in (1829 mm)	121 in (3073 mm)	24 in (610 mm)	6 in (152 mm)

**Notes**

- Data quality and run success is dependent on tool speed & line conditions
- Pipelines that are outside of the scope of these specifications can be assessed on an individual basis
- Tool design may vary from image above
- <sup>1</sup>Optional Dynamic Speed Control available
- <sup>2</sup>Contact Enduro for details



**24" DdL**