

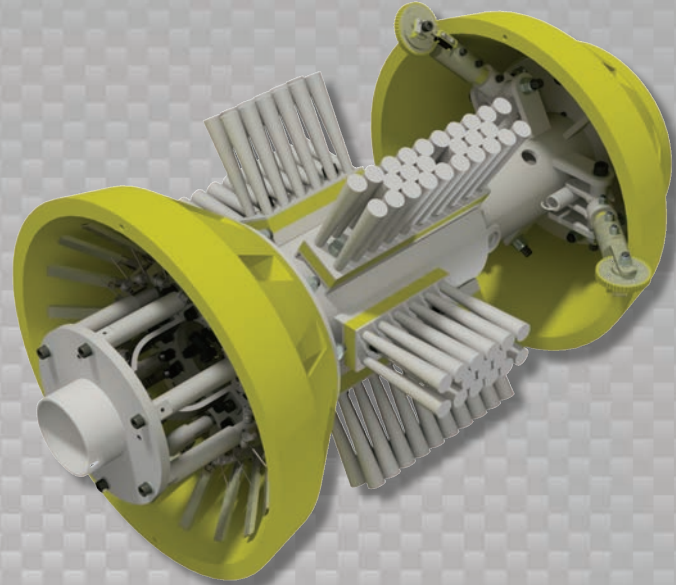


**Data Sets (No. of Sensors)**

**Physical Attributes**

Caliper	18
Odometer	2

Length	38 in (966 mm)
Weight	288 lb (131 kg)



**Operational**

Maximum Pressure	1500 psi (10342 kPa)
Temperature Range	32° to 140°F (0° to 60°C)
<sup>1</sup> Velocity (Preferred)	0.1 to 9 mph (0.04 to 4 m/s)
Minimum Required Diff. Pressure (Launching)	25 psi (172 kPa)
Minimum Required Diff. Pressure (Running)	20 psi (138 kPa)

**Pipeline Geometry Requirements**

Minimum Cross Section Diameter	15.00 in (381 mm)
Minimum Bend Radius	1.5D
Minimum Bend Separation (1.5D Bends)	Back to Back
Minimum Tee Separation (Centerline to Centerline)	50 in (1270 mm)

**Reporting**

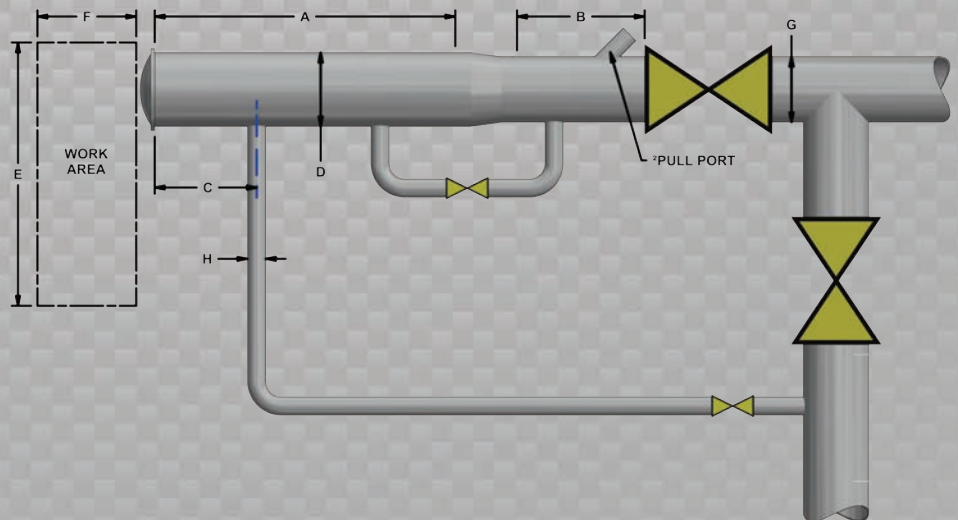
<b>Dent/Ovality Sizing</b>	
Dent Depth Sizing	0.10 in (2.5 mm)
Ovality ID Reduction Accuracy	0.10 in (2.5 mm)
<b>Location Accuracy</b>	
Feature to Upstream Girth Weld	±1 in (25 mm)
Feature Orientation	±15°
<b>Bend Data</b>	
Angle Accuracy	±2°
<b>Axial Sampling</b>	
Depends on Speed, Line Condition & Length 1.5 in (38.1 mm)	

**Suggested Minimum Trap Dimensions (Contact Enduro For Minimum DdL-Combo Trap Dimensions)**

Traps	A	B	C	D	E	F	G	H
<b>Launcher</b>	50 in (1270 mm)	19 in (483 mm)	18 in (457 mm)	22 in (559 mm)	68 in (1727 mm)	110 in (2794 mm)	20 in (508 mm)	6 in (152 mm)
<b>Receiver</b>	50 in (1270 mm)	50 in (1270 mm)	18 in (457 mm)	22 in (559 mm)	68 in (1727 mm)	110 in (2794 mm)	20 in (508 mm)	6 in (152 mm)

**Notes**

- Data quality and run success is dependent on tool speed & line conditions
- Pipelines that are outside of the scope of these specifications can be assessed on an individual basis
- Tool design may vary from image above
- <sup>1</sup>Optional Dynamic Speed Control available
- <sup>2</sup>Contact Enduro for details



**20" DdL**