

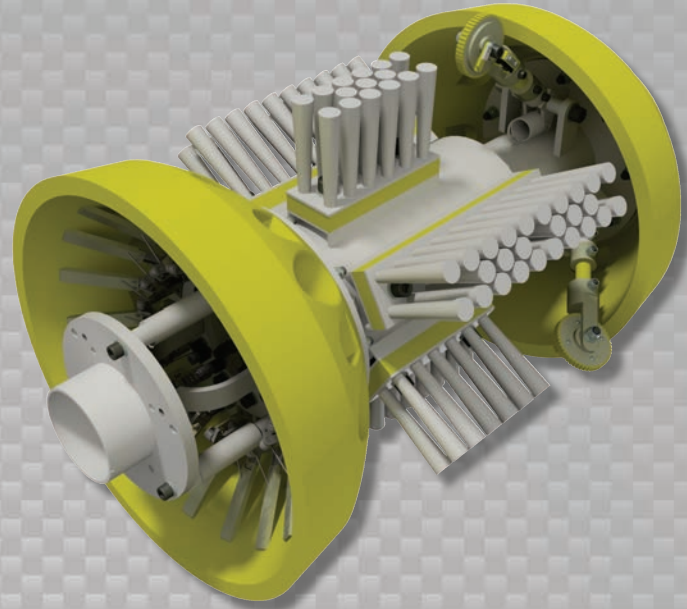


Data Sets (No. of Sensors)

Physical Attributes

Caliper	18
Odometer	2

Length	32 in (813 mm)
Weight	219 lb (99 kg)



Operational

Maximum Pressure	1500 psi (10342 kPa)
Temperature Range	32° to 140°F (0° to 60°C)
Velocity (Preferred)	0.1 to 9 mph (0.04 to 4 m/s)
Minimum Required Diff. Pressure (Launching)	40 psi (276 kPa)
Minimum Required Diff. Pressure (Running)	30 psi (207 kPa)

Pipeline Geometry Requirements

Minimum Cross Section Diameter	13.50 in (343 mm)
Minimum Bend Radius	1.5D
Minimum Bend Separation (1.5D Bends)	Back to Back
Minimum Tee Separation (Centerline to Centerline)	36 in (914 mm)

Reporting

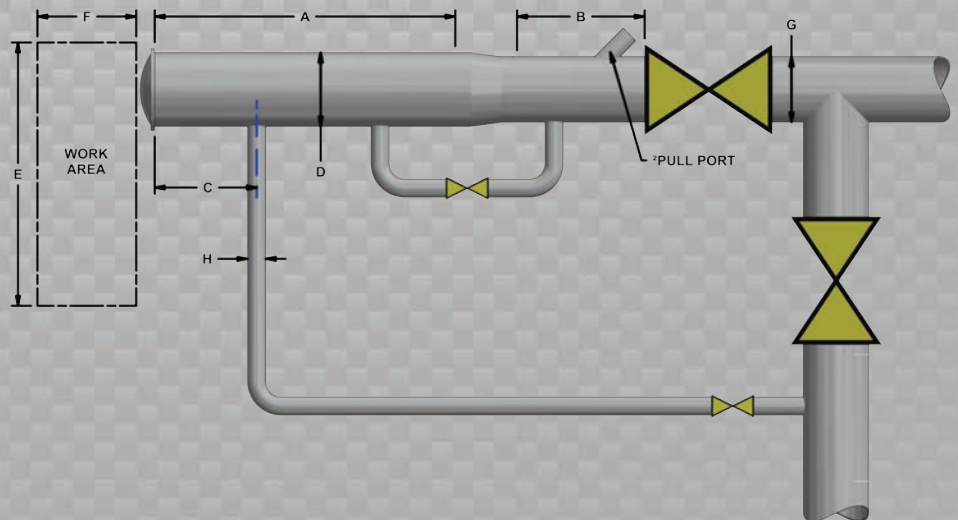
Dent/Ovality Sizing	
Dent Depth Sizing	0.09 in (2.3 mm)
Ovality ID Reduction Accuracy	0.09 in (2.3 mm)
Location Accuracy	
Feature to Upstream Girth Weld	±1 in (25 mm)
Feature Orientation	±15°
Bend Data	
Angle Accuracy	±2°
Axial Sampling	
Depends on Speed, Line Condition & Length 1.5 in (38.1 mm)	

Suggested Minimum Trap Dimensions (Contact Enduro For Minimum DdL-Combo Trap Dimensions)

Traps	A	B	C	D	E	F	G	H
Launcher	44 in (1118 mm)	16 in (406 mm)	18 in (457 mm)	20 in (457 mm)	66 in (1676 mm)	104 in (2642 mm)	18 in (457 mm)	6 in (152 mm)
Receiver	44 in (1118 mm)	44 in (1118 mm)	18 in (457 mm)	20 in (457 mm)	66 in (1676 mm)	104 in (2642 mm)	18 in (457 mm)	6 in (152 mm)

Notes

- Data quality and run success is dependent on tool speed & line conditions
- Pipelines that are outside of the scope of these specifications can be assessed on an individual basis
- Tool design may vary from image above
- ²Contact Enduro for details



18" DdL