



Data Sets (No. of Sensors)

Physical Attributes

Odometer 2

Length 34 in (864 mm)
Weight 175 lb (79 kg)

Operational

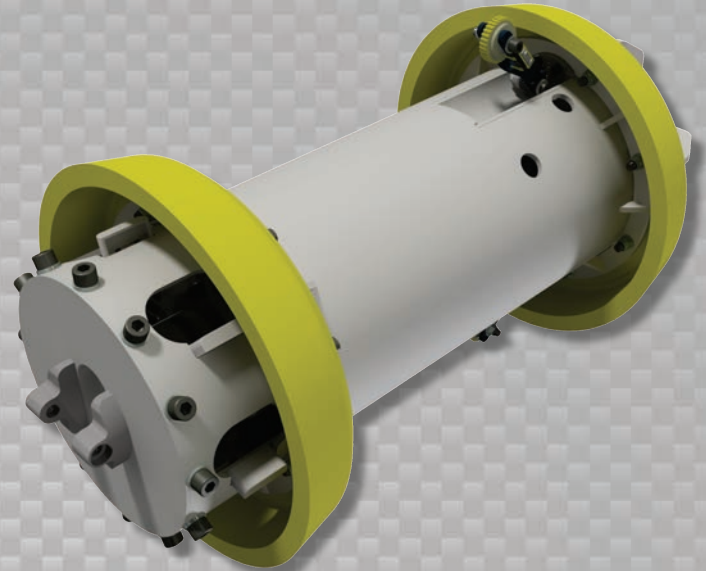
Maximum Pressure 1500 psi (10342 kPa)
Temperature Range 32° to 140°F (0° to 60°C)
¹Velocity Reduction ~25-40% of Average Pipeline Flow
Minimum Required Diff. Pressure (Launching) 45 psi (310 kPa)
Minimum Required Diff. Pressure (Running) 40 psi (276 kPa)
Bypass Valve Speed ~40s for full cycle (closed to open)

Pipeline Geometry Requirements

Minimum Cross Section Diameter 12.80 in (325 mm)
Minimum Bend Radius 1.5D
Minimum Bend Separation (1.5D Bends) 8 in (203 mm)
Minimum Tee Separation (Centerline to Centerline) 34 in (864 mm)

Notes

- Data quality and run success is dependent on tool speed & line conditions
- Pipelines that are outside of the scope of these specifications can be assessed on an individual basis
- Tool design may vary from image above
- ¹Velocity reduction dependent on line conditions, towing tool type & product composition



Tool Description

Enduro's Dynamic Speed Control technology allows the inspection, gauging or cleaning of pipelines at reduced velocities, typically without lowering product flow rates. A variable bypass module dynamically regulates the amount of product through-flow – allowing the tool to maintain consistent speeds throughout the pipeline. Available to be used in conjunction with Enduro's full line of pipeline pigs, including:

- MFL – DfL™
- Caliper – DdL™
- Cleaning
- Gauging