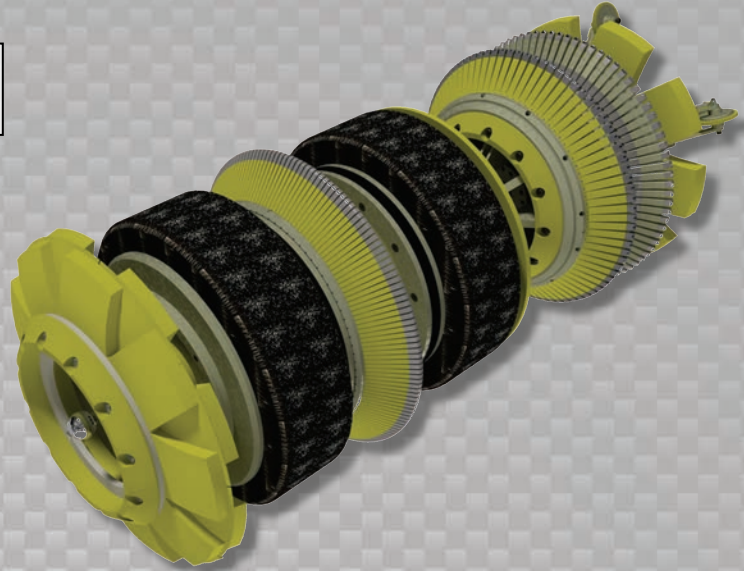


Data Sets (No. of Sensors)

Metal Loss	336
Residual	168
Caliper	84
Odometer	2

Physical Attributes

Length	68 in (1727 mm)
Weight	1237 lb (561 kg)



Operational

Maximum Pressure	1500 psi (10342 kPa)
Temperature Range	32° to 140°F (0° to 60°C)
¹ Velocity (Preferred)	0.1 to 9 mph (0.04 to 4 m/s)
Minimum Required Diff. Pressure (Launching)	25 psi (172 kPa)
Minimum Required Diff. Pressure (Running)	20 psi (138 kPa)

Pipeline Geometry Requirements

Local Min. Cross Section Diameter	19.20 in (488 mm)
Feature Bore Restriction Diameter	21.50 in (546 mm)
Minimum Bend Radius	1.5D
Minimum Bend Separation (1.5D Bends)	12 in (305 mm)
Minimum Tee Separation (Centerline to Centerline)	60 in (1524 mm)
Maximum Recordable Wall Thickness [@ 9 mph (4 m/s)]	0.75 in (19 mm)

Reporting

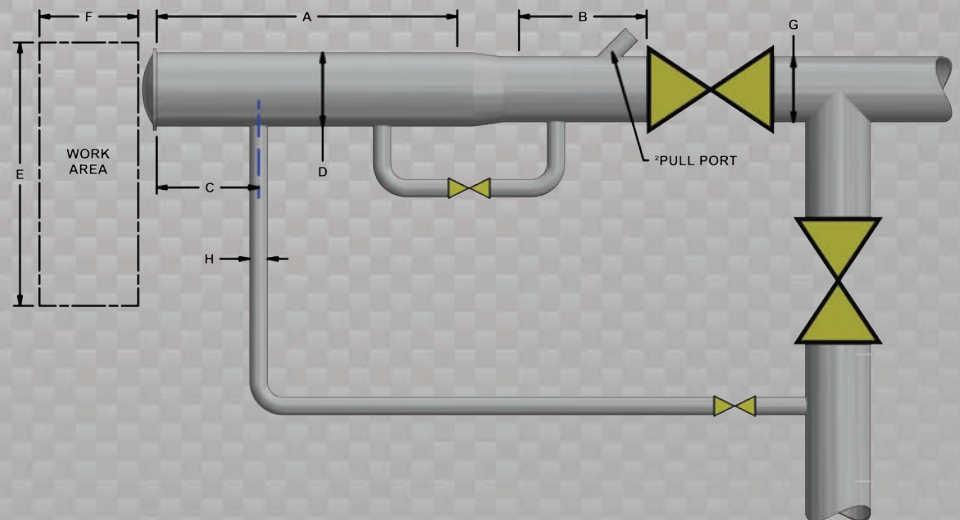
Metal Loss	Refer to Tool Performance Specification
Geometry Data	
Reporting Threshold	0.5% of Pipe OD (0.12 in/3.0 mm)
Sizing Accuracy (Depth)	0.12 in (3.0 mm)
Location Accuracy	
Axial	±1 in (25 mm) within a joint
Circumferential	±10°
Bend Data	
Angle Accuracy	±2°

Suggested Minimum Trap Dimensions

Traps	A	B	C	D	E	F	G	H
Launcher	80 in (2032 mm)	34 in (864 mm)	18 in (457 mm)	26 in (660 mm)	72 in (1829 mm)	140 in (3556 mm)	24 in (610 mm)	6 in (152 mm)
Receiver	80 in (2032 mm)	80 in (2032 mm)	18 in (457 mm)	26 in (660 mm)	72 in (1829 mm)	140 in (3556 mm)	24 in (610 mm)	6 in (152 mm)

Notes

- Data quality and run success is dependent on tool speed & line conditions
- Pipelines that are outside of the scope of these specifications can be assessed on an individual basis
- Tool design may vary from image above
- ¹Optional Dynamic Speed Control available
- ²Contact Enduro for details



24" DfL-DD