

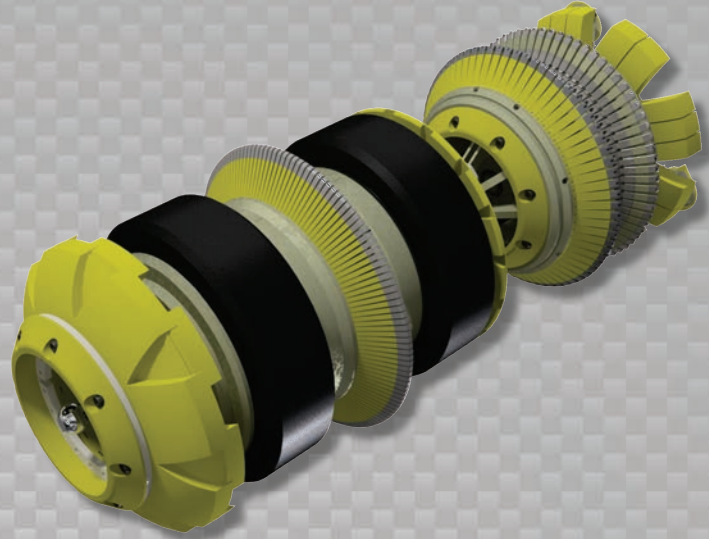


Data Sets (No. of Sensors)

Metal Loss	288
Residual	144
Caliper	72
Odometer	2

Physical Attributes

Length	61 in (1549 mm)
Weight	804 lb (365 kg)



Operational

Maximum Pressure	1500 psi (10342 kPa)
Temperature Range	32° to 140°F (0° to 60°C)
¹ Velocity (Preferred)	0.1 to 9 mph (0.04 to 4 m/s)
Minimum Required Diff. Pressure (Launching)	25 psi (172 kPa)
Minimum Required Diff. Pressure (Running)	20 psi (138 kPa)

Pipeline Geometry Requirements

Local Min. Cross Section Diameter	16.40 in (417 mm)
³ Feature Bore Restriction Diameter	18.00 in (457 mm)
Minimum Bend Radius	1.5D
Minimum Bend Separation (1.5D Bends)	10 in (254 mm)
Minimum Tee Separation (Centerline to Centerline)	50 in (1270 mm)
Maximum Recordable Wall Thickness [[@] 9 mph (4 m/s)]	0.75 in (19 mm)

Reporting

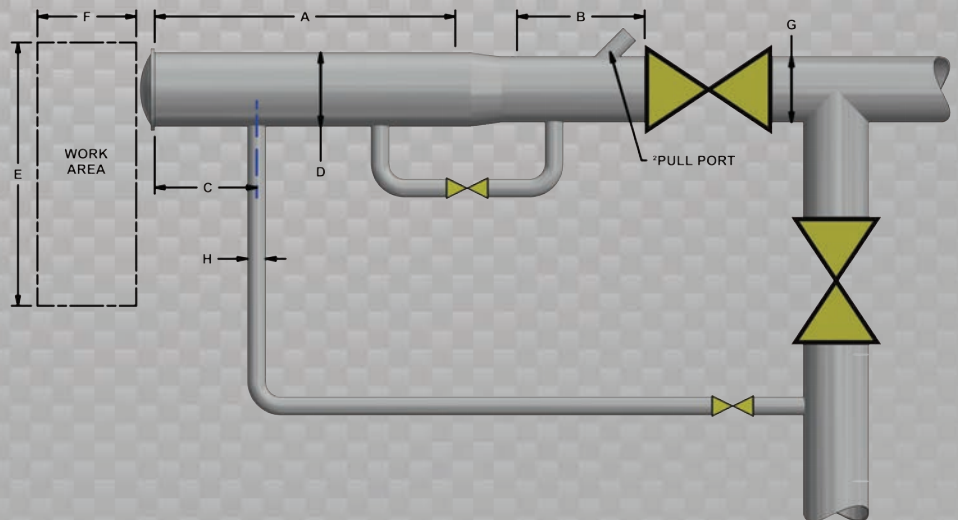
Metal Loss	Refer to Tool Performance Specification
Geometry Data	
Reporting Threshold	0.5% of Pipe OD (0.10 in/2.5 mm)
Sizing Accuracy (Depth)	0.10 in (2.5 mm)
Location Accuracy	
Axial	±1 in (25 mm) within a joint
Circumferential	±10°
Bend Data	
Angle Accuracy	±2°

Suggested Minimum Trap Dimensions

Traps	A	B	C	D	E	F	G	H
Launcher	73 in (1854 mm)	31 in (787 mm)	18 in (457 mm)	22 in (559 mm)	68 in (1727 mm)	133 in (3378 mm)	20 in (508 mm)	6 in (152 mm)
Receiver	73 in (1854 mm)	73 in (1854 mm)	18 in (457 mm)	22 in (559 mm)	68 in (1727 mm)	133 in (3378 mm)	20 in (508 mm)	6 in (152 mm)

Notes

- Data quality and run success is dependent on tool speed & line conditions
- Pipelines that are outside of the scope of these specifications can be assessed on an individual basis
- Tool design may vary from image above
- ¹Optional Dynamic Speed Control available
- ²Contact Enduro for details
- ³Contact Enduro for options if MCSD is less than shown above



20" DfL-DD