

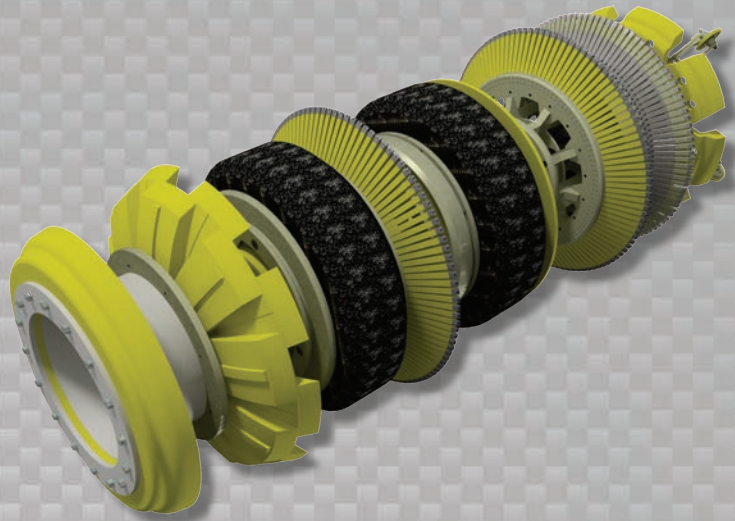


Data Sets (No. of Sensors)

Metal Loss	216
Residual	216
Caliper	108
Odometer	2

Physical Attributes

Length	95 in (2718 mm)
Weight	1958 lb (888 kg)



Operational

Maximum Pressure	1500 psi (10342 kPa)
Temperature Range	32° to 140°F (0° to 60°C)
¹ Velocity (Preferred)	0.1 to 9 mph (0.04 to 4 m/s)
Minimum Required Diff. Pressure (Launching)	20 psi (138 kPa)
Minimum Required Diff. Pressure (Running)	15 psi (103 kPa)

Pipeline Geometry Requirements

Local Min. Cross Section Diameter	24.00 in (610 mm)
Feature Bore Restriction Diameter	27.00 in (686 mm)
Minimum Bend Radius	1.5D
Minimum Bend Separation (1.5D Bends)	15 in (381 mm)
Minimum Tee Separation (Centerline to Centerline)	75 in (1905 mm)
Maximum Recordable Wall Thickness [[@] 9 mph (4 m/s)]	0.75 in (19 mm)

Reporting

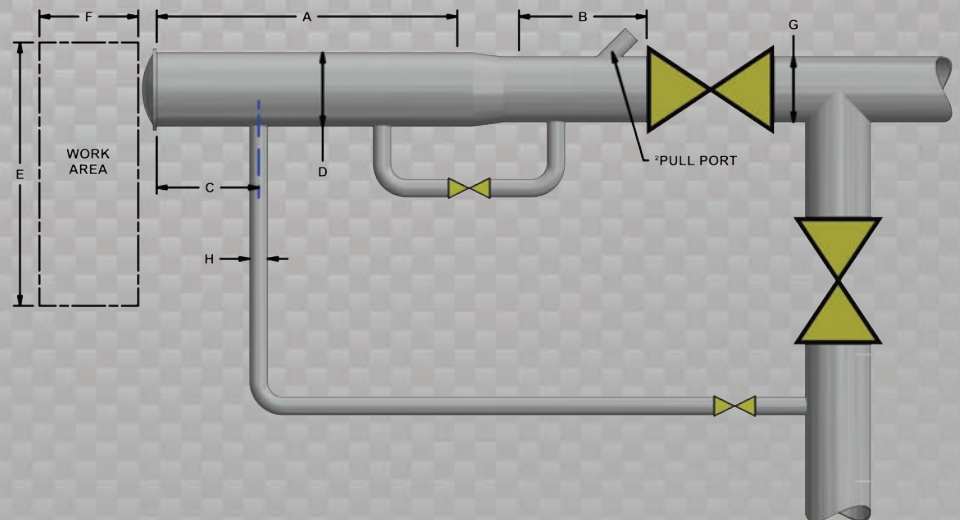
Metal Loss	Refer to Tool Performance Specification
Geometry Data	
Reporting Threshold	0.5% of Pipe OD (0.15 in/3.8 mm)
Sizing Accuracy (Depth)	0.15 in (3.8 mm)
Location Accuracy	
Axial	±1 in (25 mm) within a joint
Circumferential	±10°
Bend Data	
Angle Accuracy	±2°

Suggested Minimum Trap Dimensions

Traps	A	B	C	D	E	F	G	H
Launcher	107 in (2718 mm)	48 in (1219 mm)	18 in (457 mm)	32 in (813 mm)	78 in (1981 mm)	167 in (4242 mm)	30 in (762 mm)	8 in (203 mm)
Receiver	107 in (2718 mm)	107 in (2718 mm)	18 in (457 mm)	32 in (813 mm)	78 in (1981 mm)	167 in (4242 mm)	30 in (762 mm)	8 in (203 mm)

Notes

- Data quality and run success is dependent on tool speed & line conditions
- Pipelines that are outside of the scope of these specifications can be assessed on an individual basis
- Tool design may vary from image above
- ¹Optional Dynamic Speed Control available
- ²Contact Enduro for details



30" DfL-Combo