

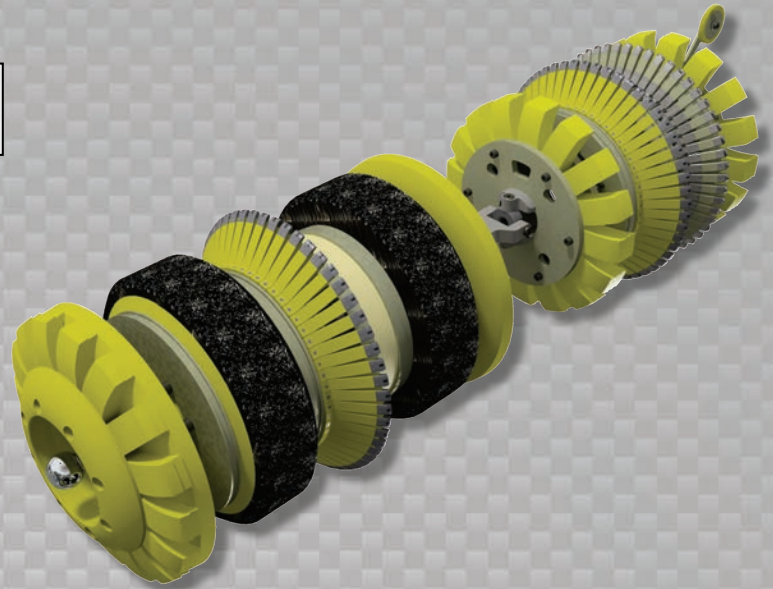


Data Sets (No. of Sensors)

Metal Loss	108
Residual	108
Caliper	54
Odometer	2

Physical Attributes

Length	61 in (1549 mm)
Weight	495 lb (225 kg)



Operational

Maximum Pressure	1500 psi (10342 kPa)
Temperature Range	32° to 140°F (0° to 60°C)
¹ Velocity (Preferred)	0.1 to 9 mph (0.04 to 4 m/s)
Minimum Required Diff. Pressure (Launching)	45 psi (310 kPa)
Minimum Required Diff. Pressure (Running)	40 psi (276 kPa)

Pipeline Geometry Requirements

Local Min. Cross Section Diameter	12.80 in (325 mm)
Feature Bore Restriction Diameter	14.25 in (362 mm)
Minimum Bend Radius	1.5D
Minimum Bend Separation (1.5D Bends)	8 in (203 mm)
Minimum Tee Separation (Centerline to Centerline)	34 in (864 mm)
Maximum Recordable Wall Thickness [@ 9 mph (4 m/s)]	0.75 in (19 mm)

Reporting

Metal Loss	Refer to Tool Performance Specification
Geometry Data	
Reporting Threshold	0.5% of Pipe OD (0.08 in/2.0 mm)
Sizing Accuracy (Depth)	0.08 in (2.0 mm)
Location Accuracy	
Axial	±1 in (25 mm) within a joint
Circumferential	±10°
Bend Data	
Angle Accuracy	±2°

Suggested Minimum Trap Dimensions

Traps	A	B	C	D	E	F	G	H
Launcher	73 in (1854 mm)	31 in (787 mm)	18 in (457 mm)	18 in (457 mm)	64 in (1626 mm)	133 in (3378 mm)	16 in (406 mm)	4 in (102 mm)
Receiver	73 in (1854 mm)	73 in (1854 mm)	18 in (457 mm)	18 in (457 mm)	64 in (1626 mm)	133 in (3378 mm)	16 in (406 mm)	4 in (102 mm)

Notes

- Data quality and run success is dependent on tool speed & line conditions
- Pipelines that are outside of the scope of these specifications can be assessed on an individual basis
- Tool design may vary from image above
- ¹Optional Dynamic Speed Control available
- ²Contact Enduro for details

