

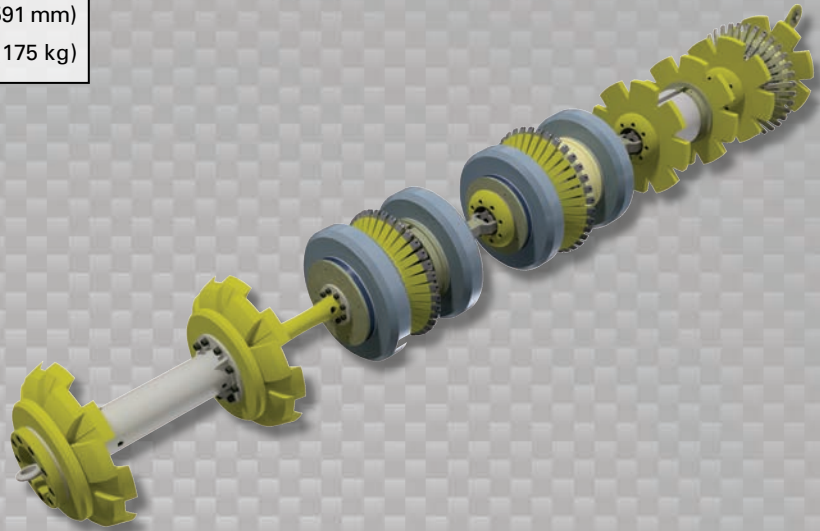


**Data Sets (No. of Sensors)**

Metal Loss (10")	72
Metal Loss (12")	72
Caliper	36
Odometer	2

**Physical Attributes**

Length	102 in (2591 mm)
Weight	385 lb (175 kg)



**Operational**

Maximum Pressure	1500 psi (10342 kPa)
Temperature Range	32° to 140°F (0° to 60°C)
Velocity (Preferred)	0.1 to 9 mph (0.04 to 4 m/s)
Minimum Required Diff. Pressure (Launching)	60 psi (414 kPa)
Minimum Required Diff. Pressure (Running)	50 psi (345 kPa)

**Pipeline Geometry Requirements**

Local Min. Cross Section Diameter	8.60 in (218 mm)
Feature Bore Restriction Diameter	9.25 in (235 mm)
Minimum Bend Radius	3D (10"), 1.5D (12")
Minimum Bend Separation (1.5D Bends)	7 in (178 mm)
Minimum Tee Separation (Centerline to Centerline)	32 in (813 mm)
Maximum Recordable Wall Thickness [ @ 9 mph (4 m/s) ]	0.63 in (16 mm)

**Reporting**

<b>Metal Loss</b>	Refer to Tool Performance Specification
<b>Geometry Data</b>	
Reporting Threshold	0.5% of Pipe OD (0.07 in/1.8 mm)
Sizing Accuracy (Depth)	0.07 in (1.8 mm)
<b>Location Accuracy</b>	
Axial	±1 in (25 mm) within a joint
Circumferential	±10°
<b>Bend Data</b>	
Angle Accuracy	±2°

**Suggested Minimum Trap Dimensions**

Traps	A	B	C	D	E	F	G	H
<b>Launcher</b>	114 in (2896 mm)	51 in (1295 mm)	18 in (457 mm)	14 in (356 mm)	60 in (1524 mm)	174 in (4420 mm)	10 in (254 mm)	4 in (102 mm)
<b>Receiver</b>	114 in (2896 mm)	114 in (2896 mm)	18 in (457 mm)	14 in (356 mm)	60 in (1524 mm)	174 in (4420 mm)	10 in (254 mm)	4 in (102 mm)

**Notes**

- Data quality and run success is dependent on tool speed & line conditions
- Pipelines that are outside of the scope of these specifications can be assessed on an individual basis
- Tool design may vary from image above
- <sup>2</sup>Contact Enduro for details

