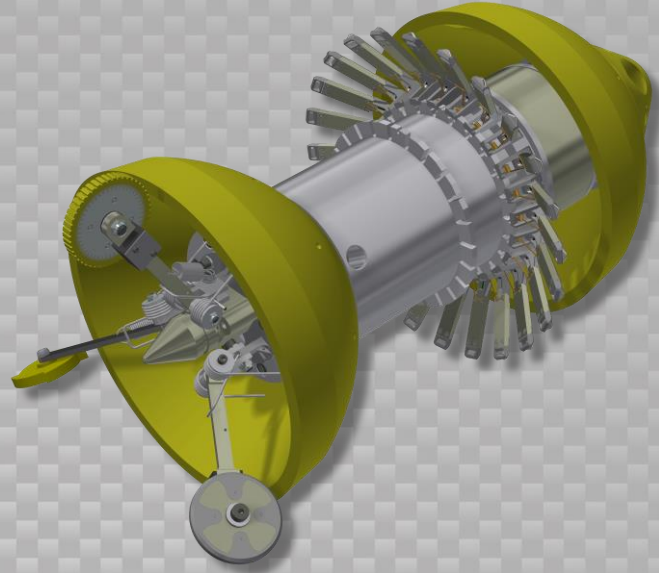


**Data Sets (No. of Sensors)**

Caliper	24
Odometer	2

**Physical Attributes**

Length	28 in (711 mm)
Weight	70 lb (32 kg)



**Operational**

Maximum Pressure	1500 psi (10342 kPa)
Temperature Range	14° to 149° F (-10° to 65° C)
Velocity (Preferred)	0.1 to 9 mph (0.04 to 4 m/s)
Minimum Required Diff. Pressure (Launching)	50 psi (345 kPa)
Minimum Required Diff. Pressure (Running)	45 psi (310 kPa)

**Pipeline Geometry Requirements**

Minimum Cross Section Diameter	9.56 in (243 mm)
Minimum Bend Radius	1.5D
Minimum Bend Separation (1.5D Bends)	Back to Back
Minimum Tee Separation (Centerline to Centerline)	32 in (813 mm)

**Reporting**

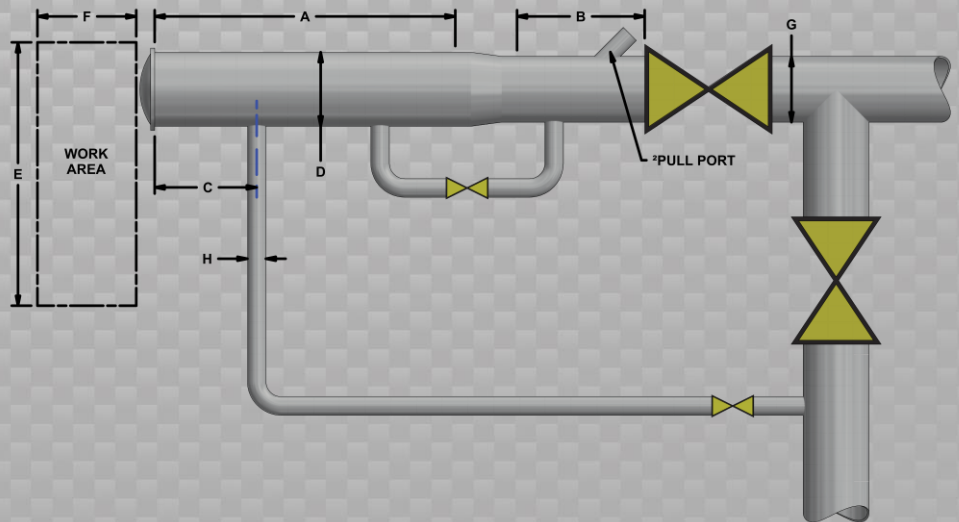
<b>Dent/Ovality Sizing</b>	
Dent Depth Sizing	0.06 in (1.6 mm)
Ovality ID Reduction Accuracy	0.06 in (1.6 mm)
<b>Location Accuracy</b>	
Feature to Upstream Girth Weld	±1 in (25 mm)
Feature Orientation	±10°
<b>Bend Data</b>	
Angle Accuracy	±2°
<b>Axial Sampling</b>	0.1 in (2.5 mm)

**Suggested Minimum Trap Dimensions (Contact Enduro For Minimum DdL-Combo Trap Dimensions)**

Traps	A	B	C	D	E	F	G	H
<b>Launcher</b>	40 in (1016 mm)	14 in (356 mm)	18 in (457 mm)	14 in (356 mm)	60 in (1524 mm)	100 in (2540 mm)	12.75 in (324 mm)	4.5 in (114 mm)
<b>Receiver</b>	40 in (1016 mm)	40 in (1016 mm)	18 in (457 mm)	14 in (356 mm)	60 in (1524 mm)	100 in (2540 mm)	12.75 in (324 mm)	4.5 in (114 mm)

**Notes**

- Data quality and run success is dependent on tool speed & line conditions
- Pipelines that are outside of the scope of these specifications can be assessed on an individual basis
- Tool design may vary from above
- <sup>2</sup>Contact Enduro for details



**12" DdL-DW<sub>2</sub>**