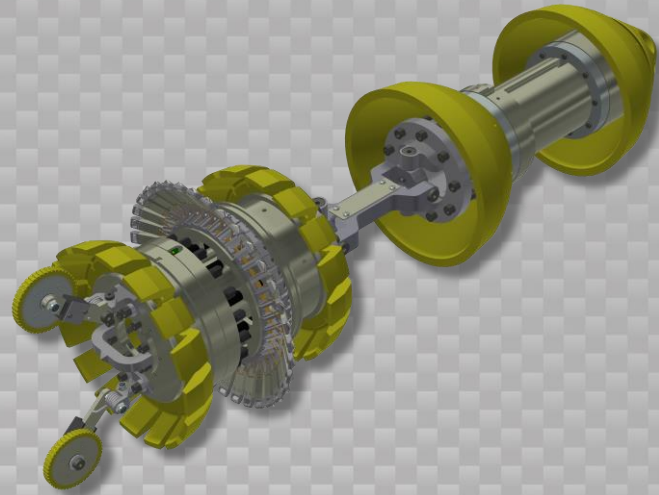


Data Sets (No. of Sensors)

Caliper	36
Odometer	2

Physical Attributes

Length	46 in (1168 mm)
Weight	110 lb (50 kg)



Operational

Maximum Pressure	1500 psi (10342 kPa)
Temperature Range	14° to 149° F (-10° to 65° C)
Velocity (Preferred)	0.1 to 9 mph (0.04 to 4 m/s)
Minimum Required Diff. Pressure (Launching)	60 psi (414 kPa)
Minimum Required Diff. Pressure (Running)	50 psi (345 kPa)

Pipeline Geometry Requirements

Minimum Cross Section Diameter	8.09 in (205 mm)
Minimum Bend Radius	1.5D
Minimum Bend Separation (1.5D Bends)	Back to Back
Minimum Tee Separation (Centerline to Centerline)	30 in (762 mm)

Reporting

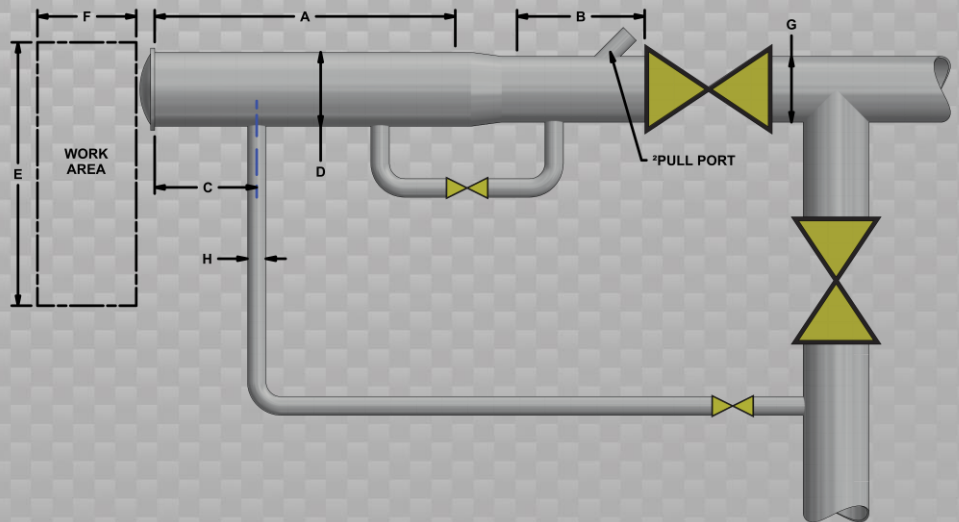
Dent/Ovality Sizing	
Dent Depth Sizing	0.05 in (1.4 mm)
Ovality ID Reduction Accuracy	0.05 in (1.4 mm)
Location Accuracy	
Feature to Upstream Girth Weld	±1 in (25 mm)
Feature Orientation	±10°
Bend Data	
Angle Accuracy	±2°
Axial Sampling	0.1 in (2.5 mm)

Suggested Minimum Trap Dimensions (Contact Enduro For Minimum DdL-Combo Trap Dimensions)

Traps	A	B	C	D	E	F	G	H
Launcher	58 in (1473 mm)	23 in (584 mm)	18 in (457 mm)	12.75 in (324 mm)	58 in (1473 mm)	118 in (2997 mm)	10.75 in (273 mm)	4.5 in (114 mm)
Receiver	58 in (1473 mm)	58 in (1473 mm)	18 in (457 mm)	12.75 in (324 mm)	58 in (1473 mm)	118 in (2997 mm)	10.75 in (273 mm)	4.5 in (114 mm)

Notes

- Data quality and run success is dependent on tool speed & line conditions
- Pipelines that are outside of the scope of these specifications can be assessed on an individual basis
- Tool design may vary from above
- ²Contact Enduro for details



10" DdL-DW₂