

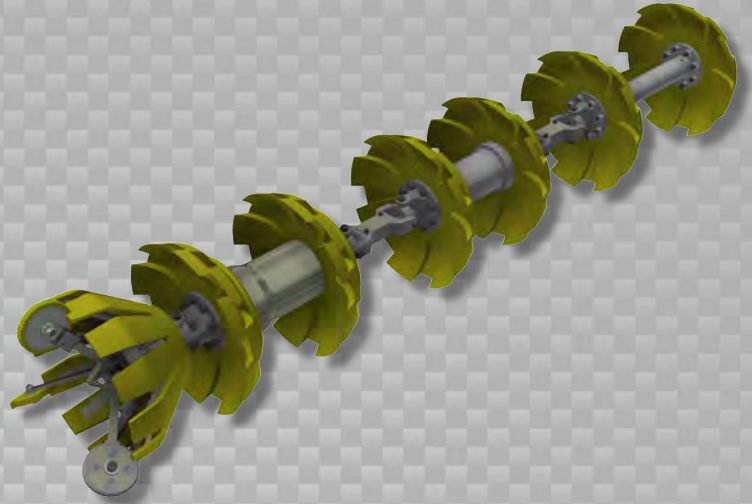


Data Sets (No. of Sensors)

Caliper	12
Odometer	2

Physical Attributes

Length	63 in (1600 mm)
Weight	62 lb (28 kg)



Operational

Maximum Pressure	1500 psi (10342 kPa)
Temperature Range	32° to 140°F (0° to 60°C)
Velocity (Preferred)	0.1 to 9 mph (0.04 to 4 m/s)
Minimum Required Diff. Pressure (Launching)	80 psi (552 kPa)
Minimum Required Diff. Pressure (Running)	70 psi (483 kPa)

Pipeline Geometry Requirements

Minimum Cross Section Diameter	6.47 in (164 mm)
Minimum Bend Radius	1.5D
Minimum Bend Separation (1.5D Bends)	Back to Back
Minimum Tee Separation (Centerline to Centerline)	30 in (762 mm)

Reporting

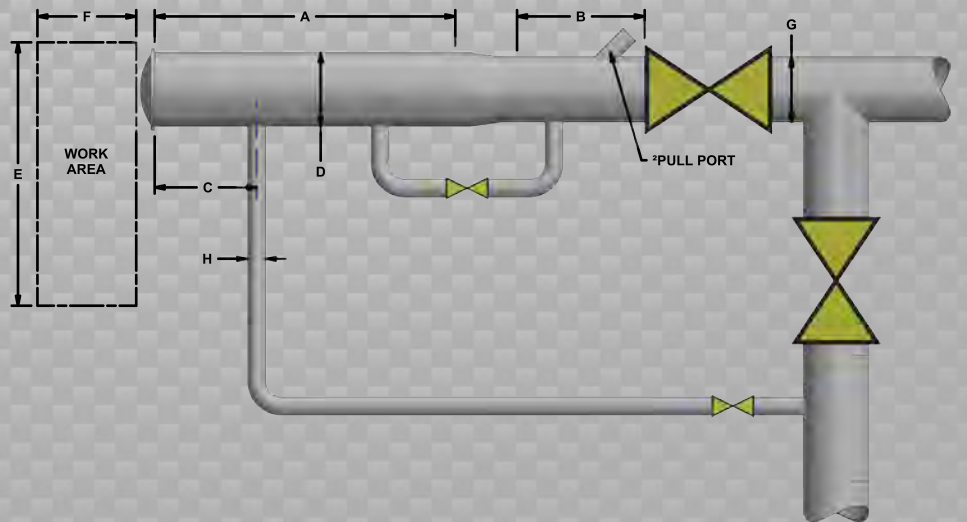
Dent/Ovality Sizing	
Dent Depth Sizing	0.11 - 0.14 in (2.8 - 3.6 mm)
Ovality ID Reduction Accuracy	0.11 - 0.14 in (2.8 - 3.6 mm)
Location Accuracy	
Feature to Upstream Girth Weld	±1 in (25 mm)
Feature Orientation	±15°
Bend Data	
Angle Accuracy	±2°
Axial Sampling	
Depends on Speed, Line Condition & Length	0.1 in (2.5 mm)

Suggested Minimum Trap Dimensions (Contact Enduro For Minimum DfL-Combo Trap Dimensions)

Traps	A	B	C	D	E	F	G	H
Launcher	75 in (1905 mm)	32 in (813 mm)	18 in (457 mm)	12 in (305 mm)	58 in (1473 mm)	135 in (3429 mm)	8 in (203 mm)	4 in (102 mm)
Receiver	75 in (1905 mm)	75 in (1905 mm)	18 in (457 mm)	12 in (305 mm)	58 in (1473 mm)	135 in (3429 mm)	8 in (203 mm)	4 in (102 mm)

Notes

- Data quality and run success is dependent on tool speed & line conditions
- Pipelines that are outside of the scope of these specifications can be assessed on an individual basis
- Tool design may vary from image above
- ²Contact Enduro for details



8" x 10" DdL