

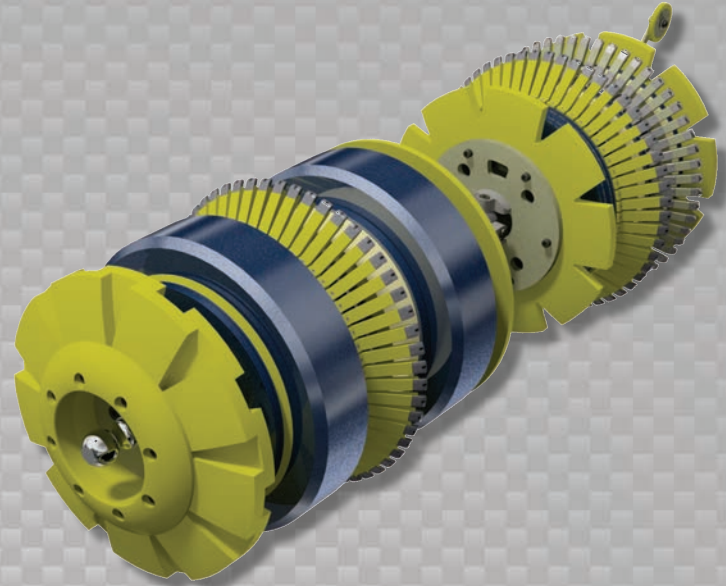


Data Sets (No. of Sensors)

Metal Loss	108
Residual	108
Caliper	54
Odometer	2

Physical Attributes

Length	60 in (1524 mm)
Weight	548 lb (249 kg)



Operational

Maximum Pressure	1500 psi (10342 kPa)
Temperature Range	32° to 140°F (0° to 60°C)
Velocity (Preferred)	0.1 to 9 mph (0.04 to 4 m/s)
Minimum Required Diff. Pressure (Launching)	40 psi (276 kPa)
Minimum Required Diff. Pressure (Running)	30 psi (207 kPa)

Pipeline Geometry Requirements

Local Min. Cross Section Diameter	14.25 in (362 mm)
Feature Bore Restriction Diameter	16.25 in (413 mm)
Minimum Bend Radius	1.5D
Minimum Bend Separation (1.5D Bends)	9 in (229 mm)
Minimum Tee Separation (Centerline to Centerline)	45 in (1143 mm)
Maximum Recordable Wall Thickness [@ 9 mph (4 m/s)]	0.75 in (19 mm)

Reporting

Metal Loss	Refer to Tool Performance Specification
Geometry Data	
Reporting Threshold	0.5% of Pipe OD (0.09 in/2.3 mm)
Sizing Accuracy (Depth)	0.09 in (2.3 mm)
Location Accuracy	
Axial	±1 in (25 mm) within a joint
Circumferential	±10°
Bend Data	
Angle Accuracy	±2°

Suggested Minimum Trap Dimensions

Traps	A	B	C	D	E	F	G	H
Launcher	72 in (1829 mm)	30 in (762 mm)	18 in (457 mm)	20 in (508 mm)	66 in (1676 mm)	132 in (3353 mm)	18 in (457 mm)	6 in (152 mm)
Receiver	72 in (1829 mm)	72 in (1829 mm)	18 in (457 mm)	20 in (508 mm)	66 in (1676 mm)	132 in (3353 mm)	18 in (457 mm)	6 in (152 mm)

Notes

- Data quality and run success is dependent on tool speed & line conditions
- Pipelines that are outside of the scope of these specifications can be assessed on an individual basis
- Tool design may vary from image above
- ²Contact Enduro for details

