

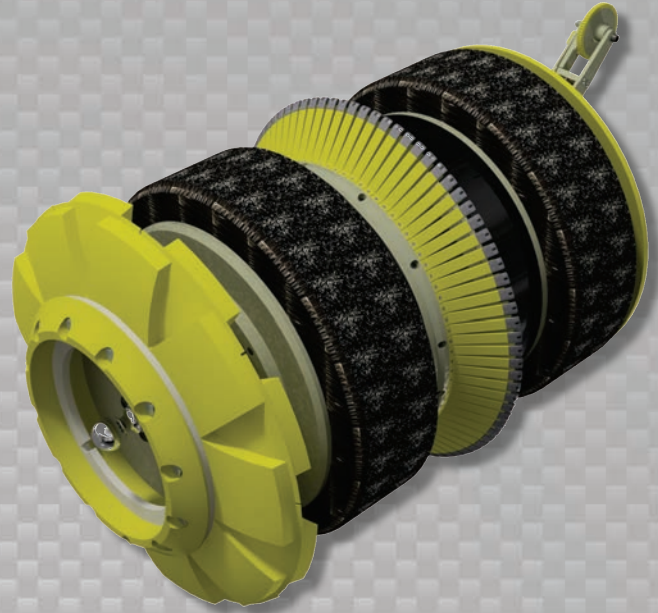


Data Sets (No. of Sensors)

Metal Loss	168
Odometer	2

Physical Attributes

Length	46 in (1168 mm)
Weight	1102 lb (500 kg)



Operational

Maximum Pressure	1500 psi (10342 kPa)
Temperature Range	32° to 140°F (0° to 60°C)
¹ Velocity (Preferred)	0.1 to 9 mph (0.04 to 4 m/s)
Minimum Required Diff. Pressure (Launching)	25 psi (172 kPa)
Minimum Required Diff. Pressure (Running)	20 psi (138 kPa)

Pipeline Geometry Requirements

Local Min. Cross Section Diameter	19.20 in (488 mm)
Feature Bore Restriction Diameter	21.50 in (546 mm)
Minimum Bend Radius	1.5D
Minimum Bend Separation (1.5D Bends)	12 in (305 mm)
Minimum Tee Separation (Centerline to Centerline)	60 in (1524 mm)
Maximum Recordable Wall Thickness [[@] 9 mph (4 m/s)]	0.75 in (19 mm)

Reporting

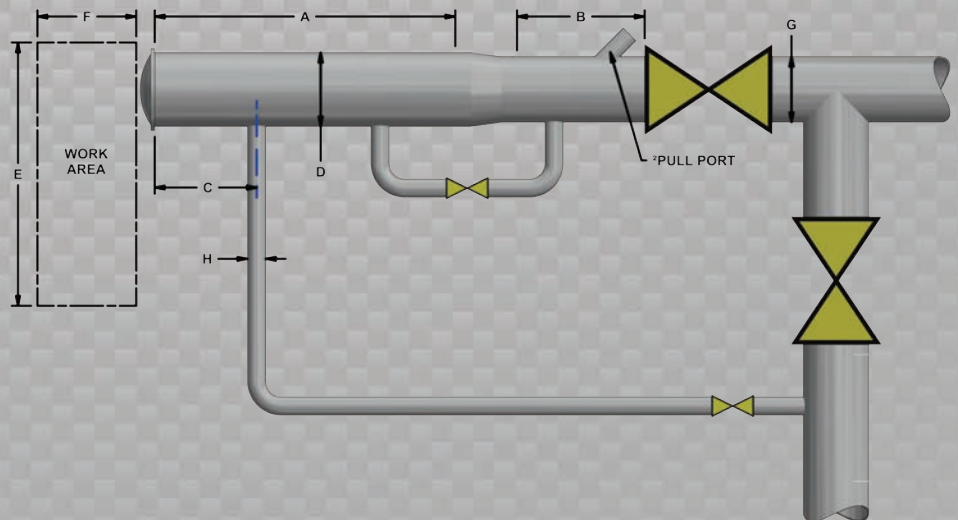
Metal Loss	Refer to Tool Performance Specification
Location Accuracy	
Axial	±1 in (25 mm) within a joint
Circumferential	±10°
Bend Data	
Angle Accuracy	±2°

Suggested Minimum Trap Dimensions (Contact Enduro For Minimum DfL-Combo Trap Dimensions)

Traps	A	B	C	D	E	F	G	H
Launcher	58 in (1473 mm)	23 in (584 mm)	18 in (457 mm)	26 in (660 mm)	72 in (1829 mm)	118 in (2997 mm)	24 in (610 mm)	6 in (152 mm)
Receiver	58 in (1473 mm)	58 in (1473 mm)	18 in (457 mm)	26 in (660 mm)	72 in (1829 mm)	118 in (2997 mm)	24 in (610 mm)	6 in (152 mm)

Notes

- Data quality and run success is dependent on tool speed & line conditions
- Pipelines that are outside of the scope of these specifications can be assessed on an individual basis
- Tool design may vary from image above
- ¹Optional Dynamic Speed Control available
- ²Contact Enduro for details



24" DfL