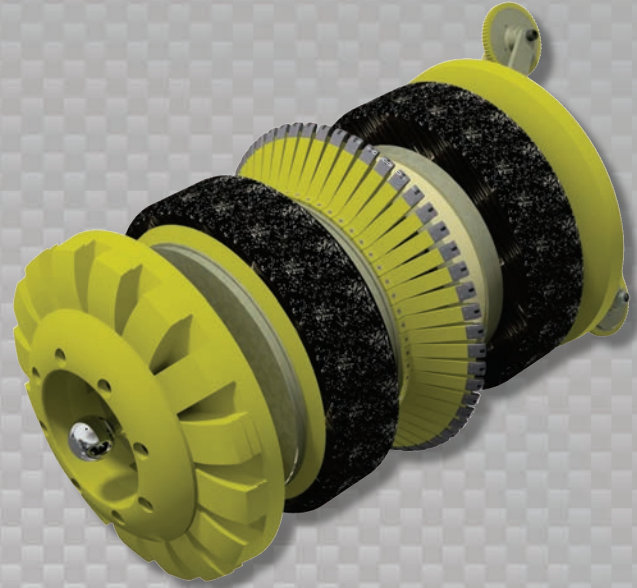


Data Sets (No. of Sensors)

Metal Loss	108
Odometer	2

Physical Attributes

Length	35 in (889 mm)
Weight	418 lb (190 kg)



Operational

Maximum Pressure	1500 psi (10342 kPa)
Temperature Range	32° to 140°F (0° to 60°C)
¹ Velocity (Preferred)	0.1 to 9 mph (0.04 to 4 m/s)
Minimum Required Diff. Pressure (Launching)	45 psi (310 kPa)
Minimum Required Diff. Pressure (Running)	40 psi (276 kPa)

Pipeline Geometry Requirements

Local Min. Cross Section Diameter	12.80 in (325 mm)
Feature Bore Restriction Diameter	14.25 in (362 mm)
Minimum Bend Radius	1.5D
Minimum Bend Separation (1.5D Bends)	8 in (203 mm)
Minimum Tee Separation (Centerline to Centerline)	34 in (864 mm)
Maximum Recordable Wall Thickness [@ 9 mph (4 m/s)]	0.75 in (19 mm)

Reporting

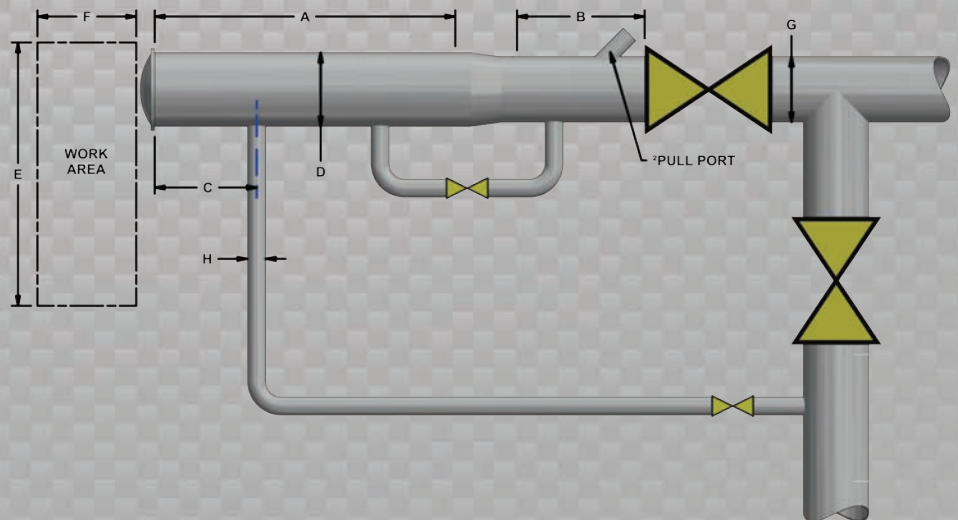
Metal Loss	Refer to Tool Performance Specification
Location Accuracy	
Axial	±1 in (25 mm) within a joint
Circumferential	±10°
Bend Data	
Angle Accuracy	±2°

Suggested Minimum Trap Dimensions (Contact Enduro For Minimum DfL-Combo Trap Dimensions)

Traps	A	B	C	D	E	F	G	H
Launcher	47 in (1194 mm)	18 in (457 mm)	18 in (457 mm)	18 in (457 mm)	64 in (1626 mm)	107 in (1626 mm)	16 in (406 mm)	4 in (102 mm)
Receiver	47 in (1194 mm)	47 in (1194 mm)	18 in (457 mm)	18 in (457 mm)	64 in (1626 mm)	107 in (1626 mm)	16 in (406 mm)	4 in (102 mm)

Notes

- Data quality and run success is dependent on tool speed & line conditions
- Pipelines that are outside of the scope of these specifications can be assessed on an individual basis
- Tool design may vary from image above
- ¹Optional Dynamic Speed Control available
- ²Contact Enduro for details



16" DfL