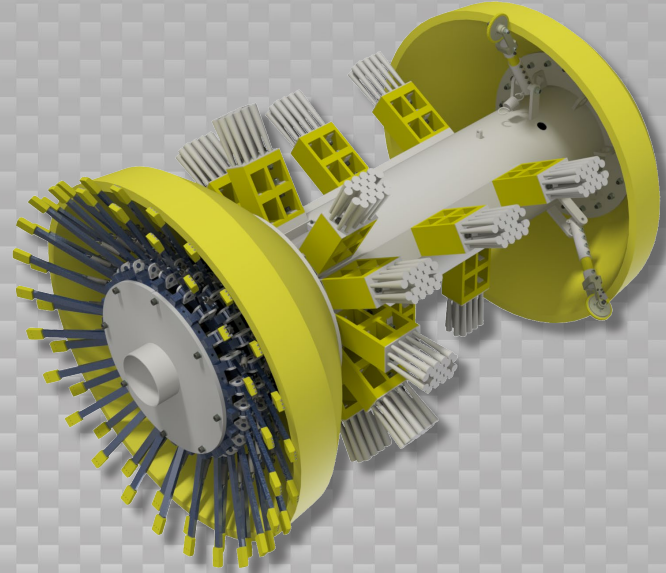


Data Sets (No. of Sensors)

Caliper	48
Spacing: ≤1.5 in (38 mm) in 0.25 in (6.4 mm) WT	
Odometer	2

Physical Attributes

Length	82 in (2083 mm)
Weight	1735 lb (787 kg)



Operational

Maximum Pressure	1500 psi (10342 kPa)
Temperature Range	32° to 140°F (0° to 60°C)
Velocity (Preferred)	0.1 to 9 mph (0.04 to 4 m/s)
Minimum Required Diff. Pressure (Launching)	20 psi (138 kPa)
Minimum Required Diff. Pressure (Running)	10 psi (69 kPa)

Pipeline Geometry Requirements

Minimum Cross Section Diameter	36.00 in (914 mm)
Minimum Bend Radius	1.5D
Minimum Bend Separation (1.5D Bends)	Back to Back
Minimum Tee Separation (Centerline to Centerline)	120 in (3048 mm)

Reporting

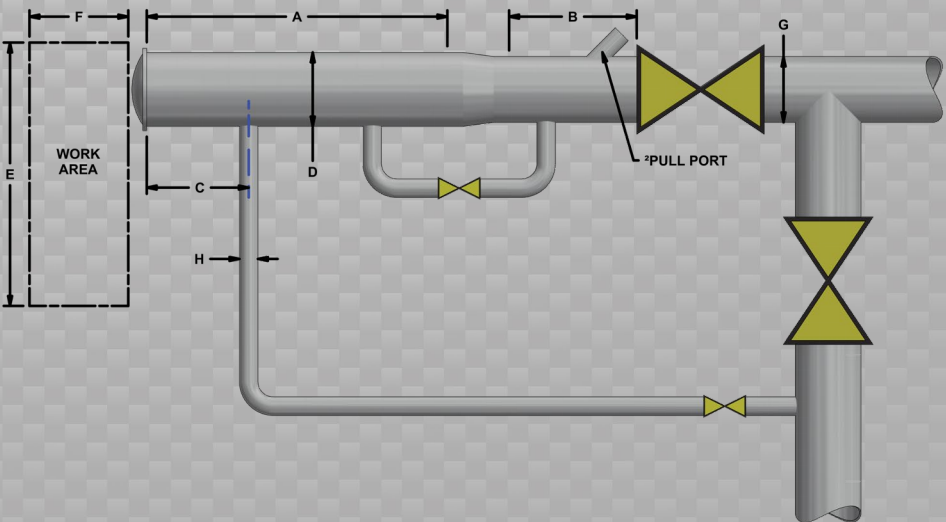
Dent/Ovality Sizing	
Dent Depth Sizing	0.24 in (6.1 mm)
Ovality ID Reduction Accuracy	0.24 in (6.1 mm)
Location Accuracy	
Feature to Upstream Girth Weld	±1 in (25 mm)
Feature Orientation	±15°
Bend Data	
Angle Accuracy	±2°
Axial Sampling	
Depends on Speed, Line Condition & Length	0.1 in (2.5 mm)

Suggested Minimum Trap Dimensions (Contact Enduro For Minimum DfL-Combo Trap Dimensions)

Traps	A	B	C	D	E	F	G	H
Launcher	94 in (2388 mm)	41 in (1041 mm)	18 in (457 mm)	50 in (1270 mm)	96 in (2438 mm)	154 in (3912 mm)	48 in (1219 mm)	12 in (305 mm)
Receiver	94 in (2388 mm)	94 in (2388 mm)	18 in (457 mm)	50 in (1270 mm)	96 in (2438 mm)	154 in (3912 mm)	48 in (1219 mm)	12 in (305 mm)

Notes

- Data quality and run success is dependent on tool speed & line conditions
- Pipelines that are outside of the scope of these specifications can be assessed on an individual basis
- Tool design may vary from image above
- ²Contact Enduro for details



48" DdL-DW