

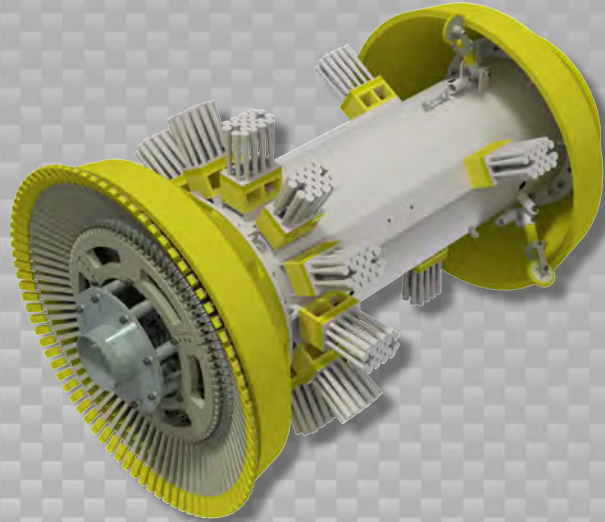


**Data Sets (No. of Sensors)**

Caliper	84
Spacing: ≤1.5 in (38 mm) in 0.25 in (6.4 mm) WT	
Odometer	2

**Physical Attributes**

Length	77 in (1956 mm)
Weight	1310 lb (594 kg)



**Operational**

Maximum Pressure	1500 psi (10342 kPa)
Temperature Range	14° to 149°F (-10° to 65°C)
<sup>1</sup> Velocity (Preferred)	0.1 to 9 mph (0.04 to 4 m/s)
Minimum Required Diff. Pressure (Launching)	20 psi (138 kPa)
Minimum Required Diff. Pressure (Running)	10 psi (69 kPa)

**Pipeline Geometry Requirements**

Minimum Cross Section Diameter	31.50 in (800 mm)
Minimum Bend Radius	1.5D
Minimum Bend Separation (1.5D Bends)	Back to Back
Minimum Tee Separation (Centerline to Centerline)	105 in (2667 mm)

**Reporting (90% Certainty U.N.O.)**

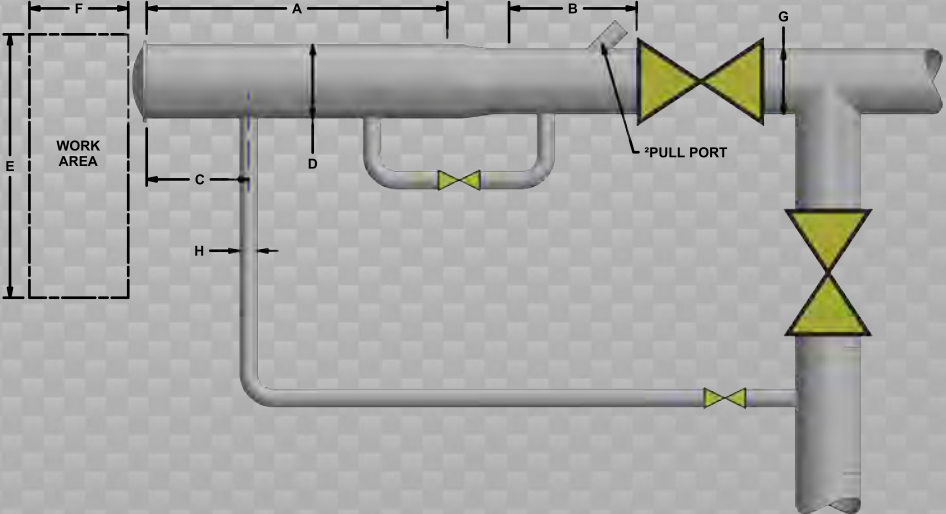
<b>Dents/Ovalities</b>	
Depth Sizing Accuracy	±0.21 in (5.3 mm)
Length Sizing Accuracy	±1 in (25 mm)
Width Sizing Accuracy	±1 in (25 mm)
<b>General</b>	
ID Reduction Accuracy	±0.10 in (2.5 mm)
<b>Location Accuracy</b>	
Feature to Upstream Girth Weld	±1 in (25 mm)
Feature Orientation	±5°
<b>Bend Data</b>	
Angle Accuracy	±2°
<b>Axial Sampling</b>	0.1 in (2.5 mm)

**Suggested Minimum Trap Dimensions (Contact Enduro For Minimum DfL-Combo Trap Dimensions)**

Traps	A	B	C	D	E	F	G	H
<b>Launcher</b>	90 in (2286 mm)	39 in (991 mm)	18 in (457 mm)	44 in (1118 mm)	90 in (2286 mm)	150 in (3810 mm)	42 in (1067 mm)	10.75 in (273 mm)
<b>Receiver</b>	90 in (2286 mm)	90 in (2286 mm)	18 in (457 mm)	44 in (1118 mm)	90 in (2286 mm)	150 in (3810 mm)	42 in (1067 mm)	10.75 in (273 mm)

**Notes**

- Data quality and run success is dependent on tool speed & line conditions
- Pipelines that are outside of the scope of these specifications can be assessed on an individual basis
- Tool design may vary from above
- <sup>1</sup>Optional Dynamic Speed Control Available
- <sup>2</sup>Contact Enduro for details



**42" DdL-DW<sub>2</sub>**