

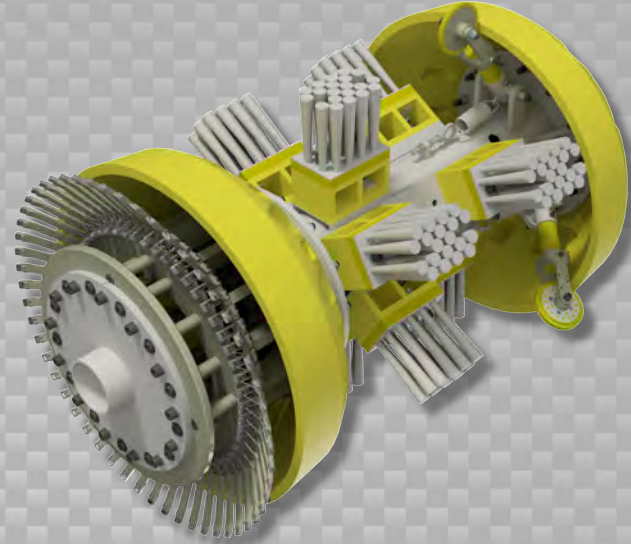


Data Sets (No. of Sensors)

Caliper	84
Spacing: ≤1.5 in (38 mm) in 0.25 in (6.4 mm) WT	
Odometer	2

Physical Attributes

Length	48 in (1219 mm)
Weight	520 lb (236 kg)



Operational

Maximum Pressure	1500 psi (10342 kPa)
Temperature Range	14° to 149°F (-10° to 65°C)
Velocity (Preferred)	0.1 to 9 mph (0.04 to 4 m/s)
Minimum Required Diff. Pressure (Launching)	25 psi (172 kPa)
Minimum Required Diff. Pressure (Running)	20 psi (138 kPa)

Pipeline Geometry Requirements

Minimum Cross Section Diameter	23.32 in (592 mm)
Minimum Bend Radius	1.5D
Minimum Bend Separation (1.5D Bends)	Back to Back
Minimum Tee Separation (Centerline to Centerline)	65 in (1651 mm)

Reporting

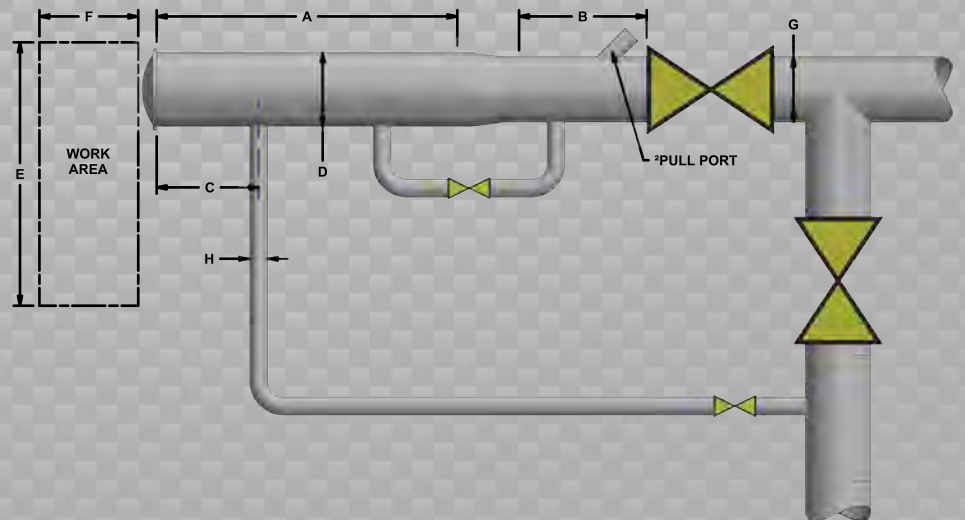
Dent/Ovality Sizing	
Dent Depth Sizing	0.13 in (3.3 mm)
Ovality ID Reduction Accuracy	0.13 in (3.3 mm)
Location Accuracy	
Feature to Upstream Girth Weld	±1 in (25 mm)
Feature Orientation	±10°
Bend Data	
Angle Accuracy	±2°
Axial Sampling	0.1 in (2.5 mm)

Suggested Minimum Trap Dimensions (Contact Enduro For Minimum DfL-Combo Trap Dimensions)

Traps	A	B	C	D	E	F	G	H
Launcher	60 in (1524 mm)	24 in (610 mm)	18 in (457 mm)	28 in (711 mm)	74 in (1880 mm)	120 in (3048 mm)	26 in (660 mm)	8.63 in (219 mm)
Receiver	60 in (1524 mm)	60 in (1524 mm)	18 in (457 mm)	28 in (711 mm)	74 in (1880 mm)	120 in (3048 mm)	26 in (660 mm)	8.63 in (219 mm)

Notes

- Data quality and run success is dependent on tool speed & line conditions
- Pipelines that are outside of the scope of these specifications can be assessed on an individual basis
- Tool design may vary from above
- ²Contact Enduro for details



26" DdL-DW₂