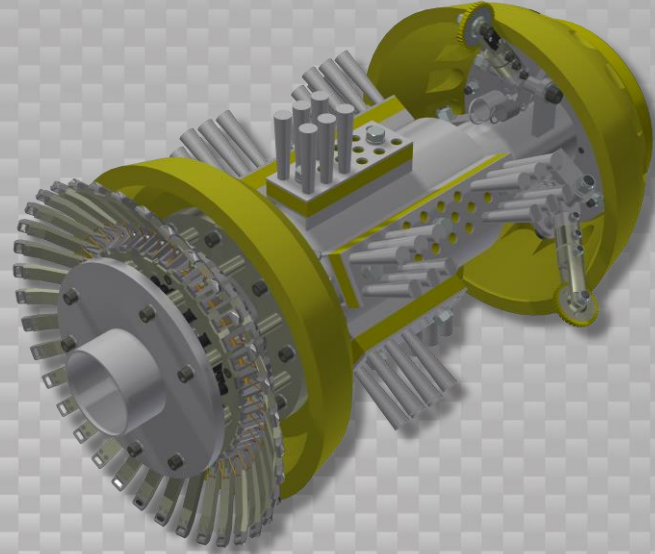


Data Sets (No. of Sensors)

Caliper	36
Odometer	2

Physical Attributes

Length	31 in (787 mm)
Weight	162 lb (74 kg)



Operational

Maximum Pressure	1500 psi (10342 kPa)
Temperature Range	14° to 149° F (-10° to 65° C)
¹ Velocity (Preferred)	0.1 to 9 mph (0.04 to 4 m/s)
Minimum Required Diff. Pressure (Launching)	45 psi (310 kPa)
Minimum Required Diff. Pressure (Running)	40 psi (276 kPa)

Pipeline Geometry Requirements

Minimum Cross Section Diameter	11.75 in (299 mm)
Minimum Bend Radius	1.5D
Minimum Bend Separation (1.5D Bends)	Back to Back
Minimum Tee Separation (Centerline to Centerline)	34 in (864 mm)

Reporting

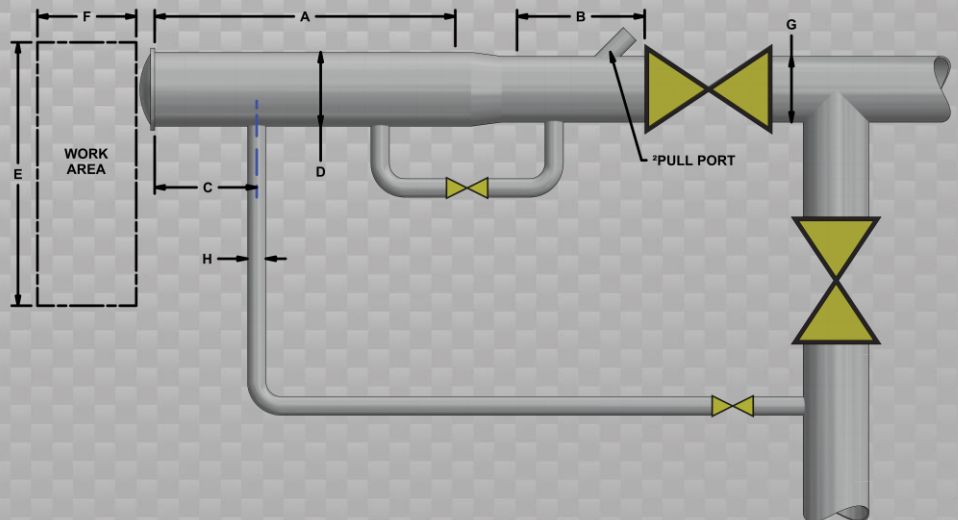
Dent/Ovality Sizing	
Dent Depth Sizing	0.08 in (2.0 mm)
Ovality ID Reduction Accuracy	0.08 in (2.0 mm)
Location Accuracy	
Feature to Upstream Girth Weld	±1 in (25 mm)
Feature Orientation	±10°
Bend Data	
Angle Accuracy	±2°
Axial Sampling	0.1 in (2.5 mm)

Suggested Minimum Trap Dimensions (Contact Enduro For Minimum DdL-Combo Trap Dimensions)

Traps	A	B	C	D	E	F	G	H
Launcher	43 in (1092 mm)	16 in (406 mm)	18 in (457 mm)	18 in (457 mm)	64 in (1626 mm)	103 in (2616 mm)	16 in (406 mm)	4.5 in (114 mm)
Receiver	43 in (1092 mm)	43 in (1092 mm)	18 in (457 mm)	18 in (457 mm)	64 in (1626 mm)	103 in (2616 mm)	16 in (406 mm)	4.5 in (114 mm)

Notes

- Data quality and run success is dependent on tool speed & line conditions
- Pipelines that are outside of the scope of these specifications can be assessed on an individual basis
- Tool design may vary from above
- ¹Optional Dynamic Speed Control Available
- ²Contact Enduro for details



16" DdL-DW₂