

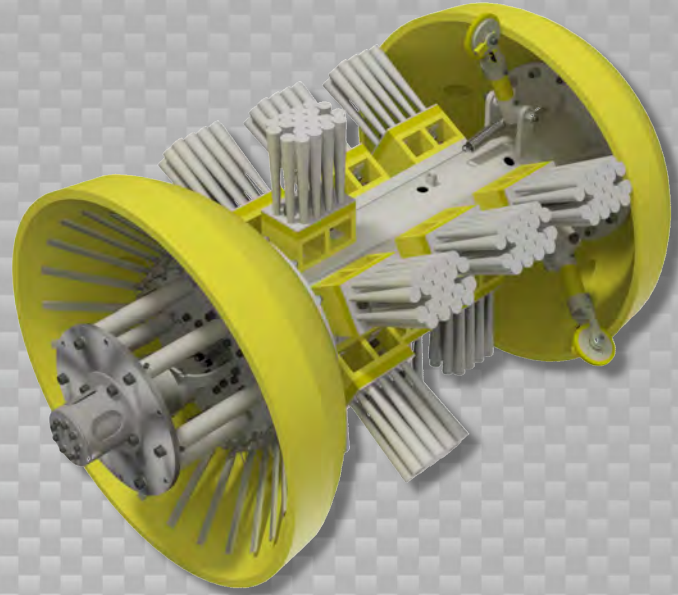


Data Sets (No. of Sensors)

Physical Attributes

Caliper	24
Odometer	2

Length	57 in (1448 mm)
Weight	848 lb (385 kg)



Operational

Maximum Pressure	1500 psi (10342 kPa)
Temperature Range	32° to 140°F (0° to 60°C)
Velocity (Preferred)	0.1 to 9 mph (0.04 to 4 m/s)
Minimum Required Diff. Pressure (Launching)	20 psi (138 kPa)
Minimum Required Diff. Pressure (Running)	15 psi (103 kPa)

Pipeline Geometry Requirements

Minimum Cross Section Diameter	24.00 in (610 mm)
Minimum Bend Radius	1.5D
Minimum Bend Separation (1.5D Bends)	Back to Back
Minimum Tee Separation (Centerline to Centerline)	80 in (2032 mm)

Reporting

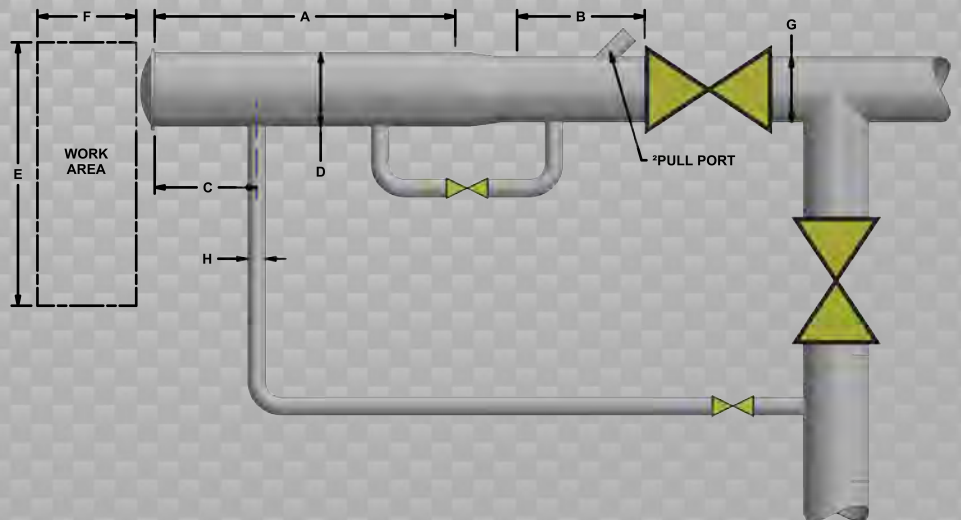
<b>Dent/Ovality Sizing</b>	
Dent Depth Sizing	0.25 in (6.4 mm)
Ovality ID Reduction Accuracy	0.25 in (6.4 mm)
<b>Location Accuracy</b>	
Feature to Upstream Girth Weld	±1 in (25 mm)
Feature Orientation	±15°
<b>Bend Data</b>	
Angle Accuracy	±2°
<b>Axial Sampling</b>	
Depends on Speed, Line Condition & Length	0.1 in (2.5 mm)

Suggested Minimum Trap Dimensions (Contact Enduro For Minimum DfL-Combo Trap Dimensions)

Traps	A	B	C	D	E	F	G	H
<b>Launcher</b>	69 in (1753 mm)	29 in (737 mm)	18 in (457 mm)	34 in (864 mm)	80 in (2032 mm)	129 in (3277 mm)	32 in (813 mm)	8 in (203 mm)
<b>Receiver</b>	69 in (1753 mm)	69 in (1753 mm)	18 in (457 mm)	34 in (864 mm)	80 in (2032 mm)	129 in (3277 mm)	32 in (813 mm)	8 in (203 mm)

Notes

- Data quality and run success is dependent on tool speed & line conditions
- Pipelines that are outside of the scope of these specifications can be assessed on an individual basis
- Tool design may vary from image above
- <sup>2</sup>Contact Enduro for details



32" DdL