

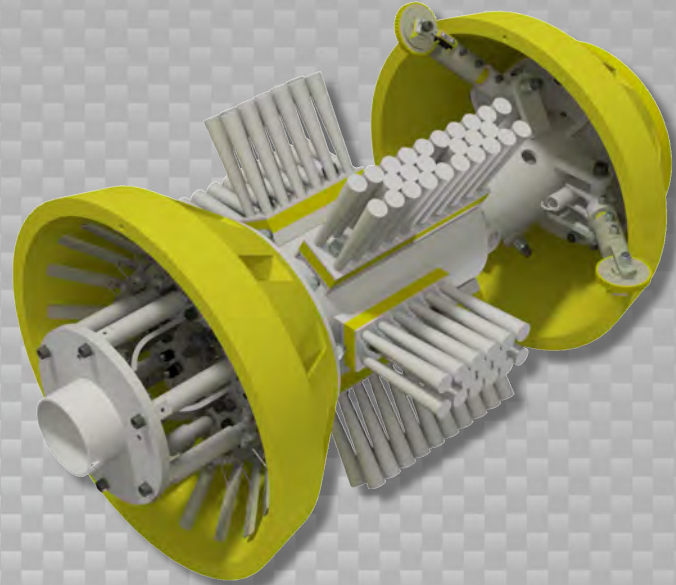


Data Sets (No. of Sensors)

Physical Attributes

Caliper	18
Odometer	2

Length	38 in (966 mm)
Weight	276 lb (125 kg)



Operational

Maximum Pressure	1500 psi (10342 kPa)
Temperature Range	32° to 140°F (0° to 60°C)
¹ Velocity (Preferred)	0.1 to 9 mph (0.04 to 4 m/s)
Minimum Required Diff. Pressure (Launching)	25 psi (172 kPa)
Minimum Required Diff. Pressure (Running)	20 psi (138 kPa)

Pipeline Geometry Requirements

Minimum Cross Section Diameter	15.00 in (381 mm)
Minimum Bend Radius	1.5D
Minimum Bend Separation (1.5D Bends)	Back to Back
Minimum Tee Separation (Centerline to Centerline)	50 in (1270 mm)

Reporting

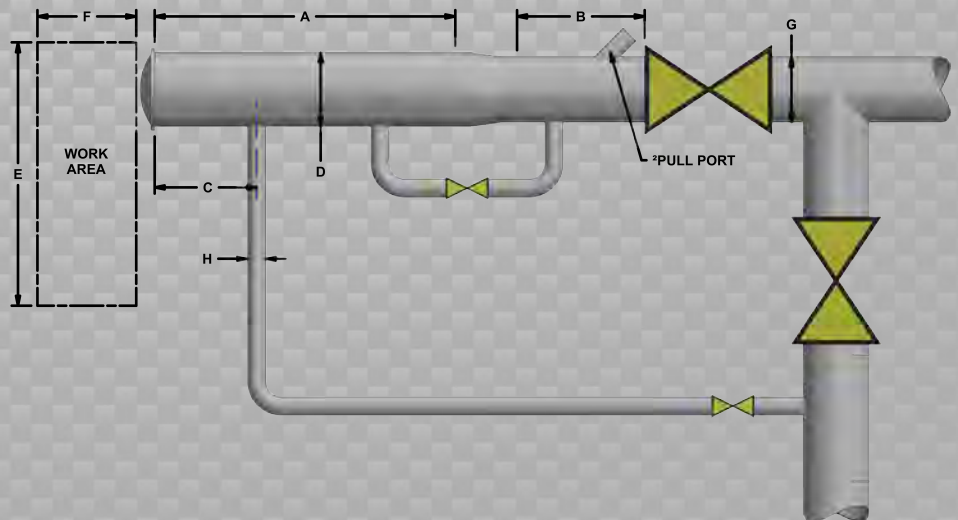
Dent/Ovality Sizing	
Dent Depth Sizing	0.20 in (5.1 mm)
Ovality ID Reduction Accuracy	0.20 in (5.1 mm)
Location Accuracy	
Feature to Upstream Girth Weld	±1 in (25 mm)
Feature Orientation	±15°
Bend Data	
Angle Accuracy	±2°
Axial Sampling	
Depends on Speed, Line Condition & Length	0.1 in (2.5 mm)

Suggested Minimum Trap Dimensions (Contact Enduro For Minimum DfL-Combo Trap Dimensions)

Traps	A	B	C	D	E	F	G	H
Launcher	50 in (1270 mm)	19 in (483 mm)	18 in (457 mm)	22 in (559 mm)	68 in (1727 mm)	110 in (2794 mm)	20 in (508 mm)	6 in (152 mm)
Receiver	50 in (1270 mm)	50 in (1270 mm)	18 in (457 mm)	22 in (559 mm)	68 in (1727 mm)	110 in (2794 mm)	20 in (508 mm)	6 in (152 mm)

Notes

- Data quality and run success is dependent on tool speed & line conditions
- Pipelines that are outside of the scope of these specifications can be assessed on an individual basis
- Tool design may vary from image above
- ¹Optional Dynamic Speed Control available
- ²Contact Enduro for details



20" DdL